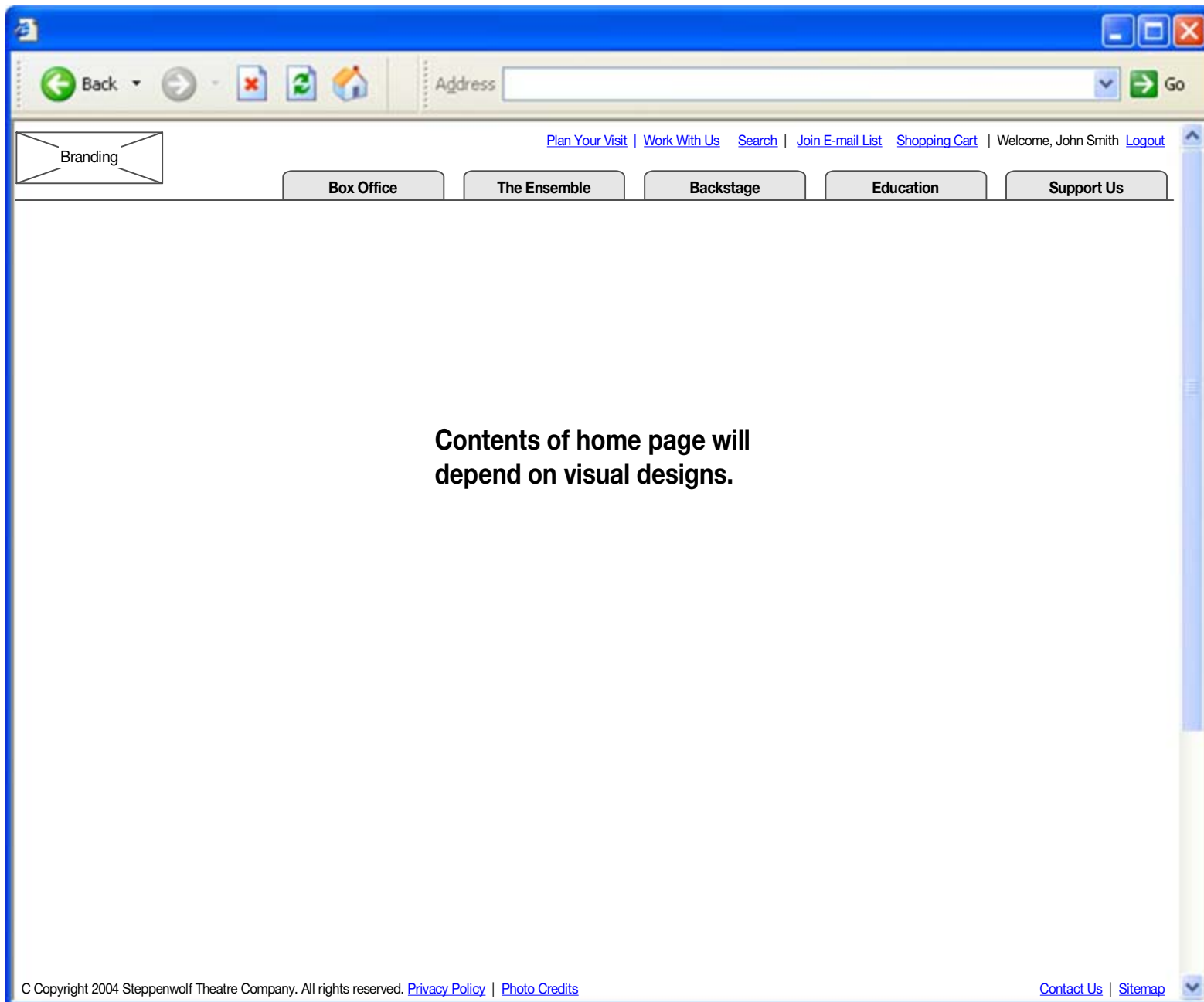


## Revision Log Version 6

Renumbered History (and moved to Ensemble)  
Added 2.10.7 International Productions and 2.10.1 Steppenwolf Productions

# Steppenwolf Redesign Schematics (version 6)

1.0 Home



COMMENTS

This document shows informational relationships only and does not represent final design or layout.

Prepared by POP  
Created/Revised: 11/10/2004

# Steppenwolf Redesign Schematics (version 6)



## 2.0 Box Office

The screenshot shows a web browser window with a navigation bar at the top containing links like 'Plan Your Visit', 'Work With Us', 'Search', 'Join E-mail List', 'Shopping Cart', and 'Welcome, John Smith Logout'. Below the navigation bar is a 'BOX OFFICE' section with sub-sections: 'Subscriptions', 'Calendar', 'Programming', 'Theaters', 'For Subscribers', 'Gift of Theater', 'Groups & Discounts', and 'Accessibility'. The main content area features a 'Box Office' section with five production cards: 'The Dresser', 'Cherry Orchard', 'Intimate Apparel', 'Lost Land', and 'The Pain and the Itch'. Each card includes an image placeholder, production name, dates, venue, and 'Explore' or 'Buy Tickets' buttons. A '29th Season' promotional box is on the right. Below is an 'Also On Sale' section with a table of upcoming productions and their details. At the bottom, there is an 'Upcoming Events' section.

Production Name	Dates	Programming Stream	Venue	Buttons
<a href="#">An Evening with Terry Gross</a>	Monday, September 27 <sup>th</sup> at 7:30pm	Presented by <a href="#">Traffic</a>	Venue	Explore, Buy Tickets
<a href="#">The Chosen</a>	From October 12-30 <sup>th</sup> , 2004	Arts Exchange <a href="#">Family Series</a>	Venue	Explore, Buy Tickets
<a href="#">[production name]</a>	[dates]	<a href="#">[programming stream]</a>	Venue	Explore, Buy Tickets
<a href="#">Golf Classic</a>	June 2, 2004	<a href="#">Special Event</a>		Explore, Buy Tickets

### COMMENTS

- 1 **Change:** Items in this area will be anything STC wishes to highlight - currently playing, etc. STC tool will need to be able to rank and set order.
- 2 Attractor for Plan Your Visit. Pulled out to support likely user cross-linking need here. See comps for full list of links here.
- 3 The production (or productions) currently on stage are visually called out.
- 4 Users can either explore productions or jump right to the ticket purchase. Buy Tickets buttons may link to either Tessitura or tickets.com.
- 5 Promotional area: This area is flexible and can be used to promote subscriptions at the start of the season or link to the new season announcement.
- 6 Design Consideration: can images be used? They can be intriguing, drawing a potential buyer into something they might not have explored otherwise.
- 7 Production name links to the explore production page.
- 8 Also on sale area lists all tickets available for purchase
- 9 Programming stream name links to programming stream detail.
- 10 When tickets are not available, there is a On Sale date indicated (where available).
- 11 How much information should be used at this stage to sell productions? Is image and name or should full description including ensemble members be included?

# Steppenwolf Redesign Schematics (version 6)

## 2.1.0 Subscriptions



Branding

Plan Your Visit | Work With Us | Search | Join E-mail List | Shopping Cart | Welcome, John Smith | Logout

BOX OFFICE

The Ensemble | Backstage | Education | Support Us

Subscriptions | Calendar | Programming | Theaters | For Subscribers | Gift of Theater | Groups & Discounts | Accessibility

### Box Office : Subscriptions

[Why Subscribe?](#)  
[Renew Subscription](#)

[Previews](#)  
[Regular Run](#)  
[Discussion Series](#)  
[Dinner Theater](#)  
[Student](#)  
[Flexible Passes](#)  
[Signed and Audio Performances](#)

Consectetur adipiscing elit, sed diam nonummy nibh euismod tincidunt ut laoreet dolore magna aliquam erat volutpat. Ut wisi enim ad m<sup>1</sup> veniam, quis nostrud exerci tation ullamcorper [benefits](#) suscipit lobortis nisl ut aliquip ex ea commodo consequat.

[The Dresser](#)  
Sept 16 - Nov. 14

[Cherry Orchard](#)  
Nov. 4 - March 5 <sup>2</sup>

[Intimate Apparel](#)  
Jan. 13 - March 13

[Lost Land](#)  
March 31 - June 5

[The Pain and the Itch](#)  
June 30 - Aug. 28

#### Select a Subscription

[Previews](#)  
[Regular Run](#)  
[Discussion Series](#) <sup>3</sup>  
[Dinner Theater](#)  
[Student](#)  
[Flexible Passes](#)  
[Signed and Audio-described Performances](#)

© Copyright 2004 Steppenwolf Theatre Company. All rights reserved. [Privacy Policy](#) | [Photo Credits](#) [Contact Us](#) | [Sitemap](#)

### COMMENTS

- <sup>1</sup> Intro text that includes:  
salesy piece about  
subscriptions  
link to benefits
- <sup>2</sup> Include list of performances  
included in series. Amount of  
detail TBD.
- <sup>3</sup> Lists all available subscription  
types.  
Phase 1 (no Tessa): links to  
page with information and  
phone number call to action.  
Phase 2: with Tessitura will  
allow addition to cart.

**Box Office : Subscriptions**

[Why Subscribe?](#)  
[Renew Subscription](#)

[Previews](#)  
[Regular Run](#)  
[Discussion Series](#)  
[Dinner Theater](#)  
[Student](#)  
[Flexible Passes](#)  
[Signed and Audio Performances](#)

**Previews**  
Consectetur adipiscing elit. Sed diam nonummy nibh euismod tincidunt ut laoreet dolore magna aliquam erat volutpat. Ut wisi enim ad minim veniam, quis nostrud exerci tation ullamcorper [benefits](#) suscipit lobortis nisl ut aliquip ex ea commodo consequat.

**Select a Date**

First Choice -- Tuesdays, 7:30 - \$170

Second Choice -- Fridays, 7:30 (Sold Out)

No. of Tickets  For quantities over x, please contact [Group Sales](#).

Senior Citizens discount (15% off)

Comments

[Add to Cart](#)

**The Dresser**  
Sept 16 - Nov. 14

**Cherry Orchard**  
Nov. 4 - March 5

**Intimate Apparel**  
Jan. 13 - March 13

**Lost Land**  
March 31 - June 5

**The Pain and the Itch**  
June 30 - Aug. 28

### COMMENTS

- 1 Short description (1-3 sentences) of subscription type.
- 2 Include list of performances included in series. Amount of detail TBD.
- 3 Drop down options include: [day of week], [time], [price/sold out].  
Steppenwolf subscribers do not choose seating locations.
- 4 Inclusion of this is TBD
- 5 Space for user to add comments or special needs.
- 6 Page has two states: subscriptions on sale, subscription not yet on sale. When subscriptions are not on sale, there should be a description and a predicted on sale date. (see content matrix for complete details)

# Steppenwolf Redesign Schematics (version 6)

## 2.2.0 Calendar



Branding

Plan Your Visit | Work With Us | Search | Join E-mail List | Shopping Cart | Welcome, John Smith | Logout

BOX OFFICE | The Ensemble | Backstage | Education | Support Us

Subscriptions | Calendar | Programming | Theaters | For Subscribers | Gift of Theater | Groups & Discounts | Accessibility

### Box Office : Calendar

September 2004 | **October 2004** | November 2004

View: - Productions

Sun	Mon	Tues	Wed	Thurs	Fri	Sat
			2	3	4 <a href="#">The Dresser</a> 8:00pm BUY EXPLORE	5 <a href="#">The Dresser</a> 8:00pm
6 <a href="#">The Dresser</a> 2:00pm <a href="#">The Dresser</a> 8:00pm <a href="#">Golf Classic</a> 8:00pm	7 <a href="#">The Chosen</a> Family Series 8:00pm	8 <a href="#">The Dresser</a> with lecture 8:00pm BUY EXPLORE	9 <a href="#">Production name</a> 1:30pm BUY EXPLORE <a href="#">Production name</a> 8:30pm	10 <a href="#">Production name</a> 1:30pm <a href="#">Production name</a> 8:30pm	11 <a href="#">Production name</a> 1:30pm <a href="#">Production name</a> 8:30pm BUY EXPLORE	12 <a href="#">Production name</a> 1:30pm <a href="#">Production name</a> 8:30pm

Etc...

© Copyright 2004 Steppenwolf Theatre Company. All rights reserved. [Privacy Policy](#) | [Photo Credits](#) | [Contact Us](#) | [Sitemap](#)

### COMMENTS

- Calendar shows selected month and two months ahead.
- Arrows allow navigation between months. Backwards archiving TBD.
- Drop down menu filters results. Default view is all items.  
Filters:  
Productions  
Education  
Special Events  
Auxilliary Council  
Director's Circle
- Name links to explore production.
- Buy button links to buy ticket pages. Appears when tickets are available.
- Calendar displays full calendar month. Rows expand or contract vertically to accommodate greater or fewer entries.

# Steppenwolf Redesign Schematics (version 6)

## 2.3.0 Explore Production



The screenshot shows a web browser window with a navigation menu and a production page. The page title is "Box Office : Explore Production". The main content area features a slide show placeholder (4), a "Buy Tickets" button (6), and a paragraph of placeholder text (1). Below the text are links for "More" (5) and "Backstage" (2). A "29th Season" button (3) and a "Subscribe" button are on the right. The footer contains copyright information and links for "Privacy Policy", "Photo Credits", "Contact Us", and "Sitemap".

Annotations on the page:

- 1: Short description
- 2: Links to related backstage articles
- 3: Same as Send to a Friend, but highlighted here.
- 4: Behind the Scenes piece. TBD
- 5: Links to supplementary materials as available for a specific production.
- 6: This style of page will also be used for events but will have a slightly truncated version of content.
- 7: Links to corresponding venue page (Garage, Upstairs, Downstairs)

### COMMENTS

- 1 Short description
- 2 Links to related backstage articles
- 3 Same as Send to a Friend, but highlighted here.
- 4 Behind the Scenes piece. TBD
- 5 Links to supplementary materials as available for a specific production.
- 6 This style of page will also be used for events but will have a slightly truncated version of content.
- 7 Links to corresponding venue page (Garage, Upstairs, Downstairs)

# Steppenwolf Redesign Schematics (version 6)

2.10.1 Steppenwolf Productions



Branding

Plan Your Visit | Work With Us | Search | Join E-mail List | Shopping Cart | Welcome, John Smith | Logout

BOX OFFICE | The Ensemble | Backstage | Education | Support Us

Subscriptions | Calendar | Programming | Theaters | For Subscribers | Gift of Theater | Groups & Discounts | Accessibility

## Box Office : Programming

[Steppenwolf Productions](#) **Steppenwolf Productions**  
[Visiting Companies](#)  
[Traffic](#)  
[Arts Exchange](#)  
[Events](#)  
[National & International Productions](#)

Consectetur adipisicing elit, sed diam nonummy nibh euismod tincidunt ut laoreet dolore magna aliquam erat volutpat. Ut wisi enim ad minim veniam, quis nostrud exerci tation ullamcorper suscipit lobortis nisl ut aliquip ex ea commodo consequat. Duis autem vel eum iriure dolor in hendrerit in vulputate velit esse molestie consequat, vel illum dolore eu feui **1** nulla facilisis at vero eros et accumsan et iusto odio dignissim qui blandit praesent luptatum.

[The Dresser](#)  
Sept 16 - Nov. 14

[Cherry Orchard](#) **2**  
Nov. 4 - March 5

[Intimate Apparel](#)  
Jan. 13 - March 13

[Lost Land](#)  
March 31 - June 5

[The Pain and the Itch](#)  
June 30 - Aug. 28

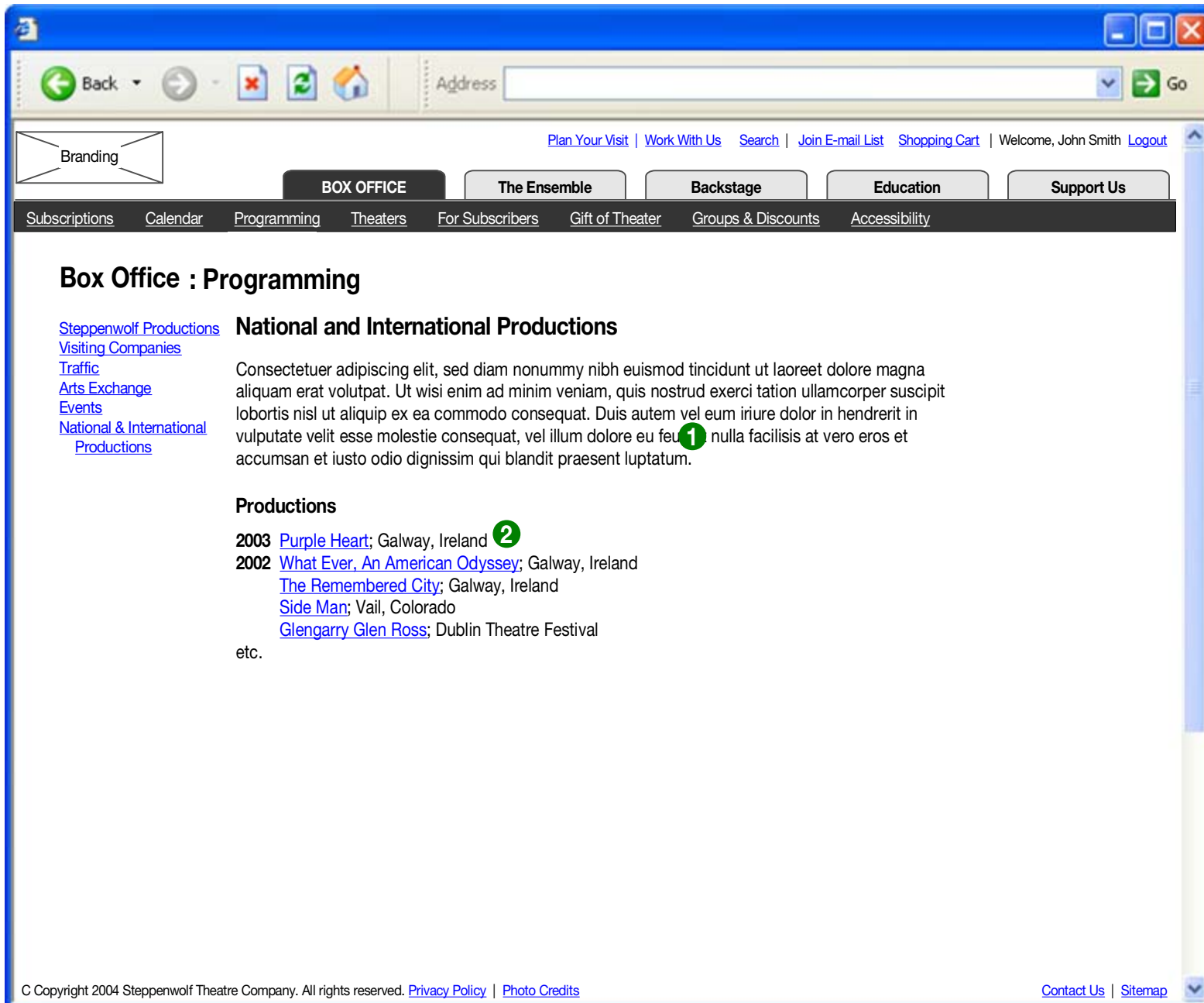
© Copyright 2004 Steppenwolf Theatre Company. All rights reserved. [Privacy Policy](#) | [Photo Credits](#) [Contact Us](#) | [Sitemap](#)

## COMMENTS

- 1** Introductory paragraph
- 2** Method for displaying productions is TBD. Should include all listings for a given programming stream.

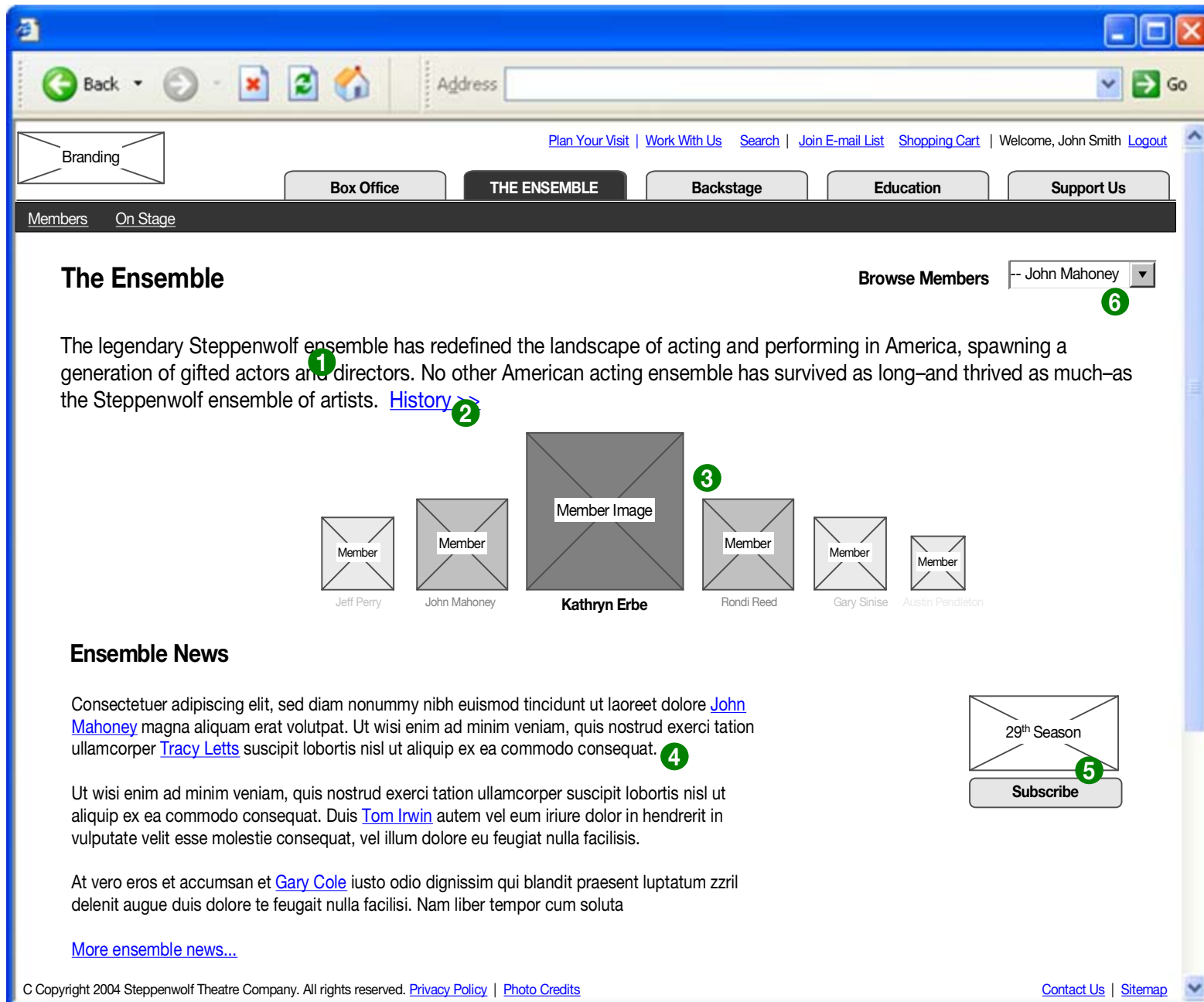
# Steppenwolf Redesign Schematics (version 6)

2.10.7 National & Internat'l Pr



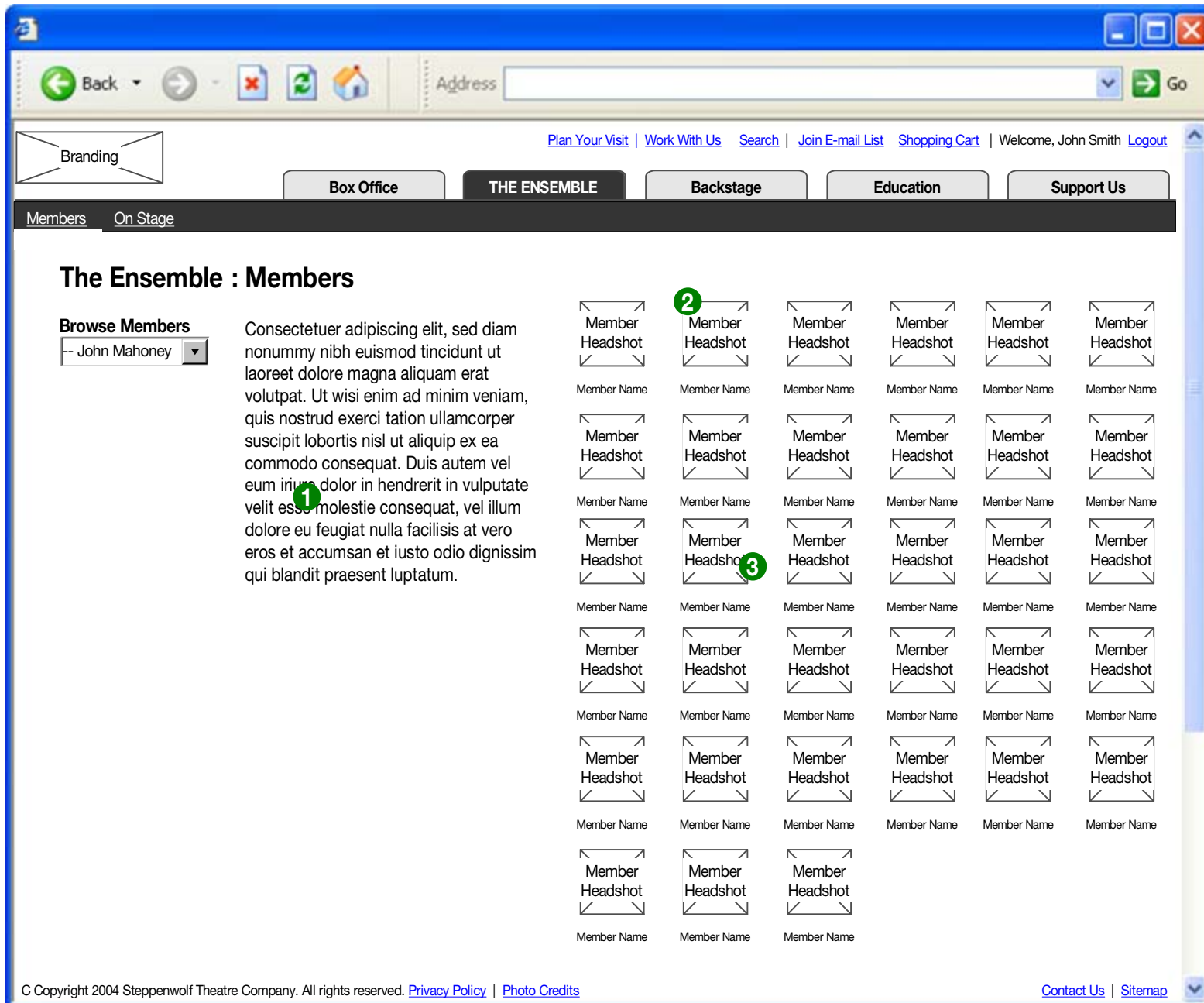
## COMMENTS

- 1 Introductory paragraph
- 2 Listing are static and included in reverse chronological order. List year, production, and location. Production link to 4.8.3.1.0 Past Production detail.



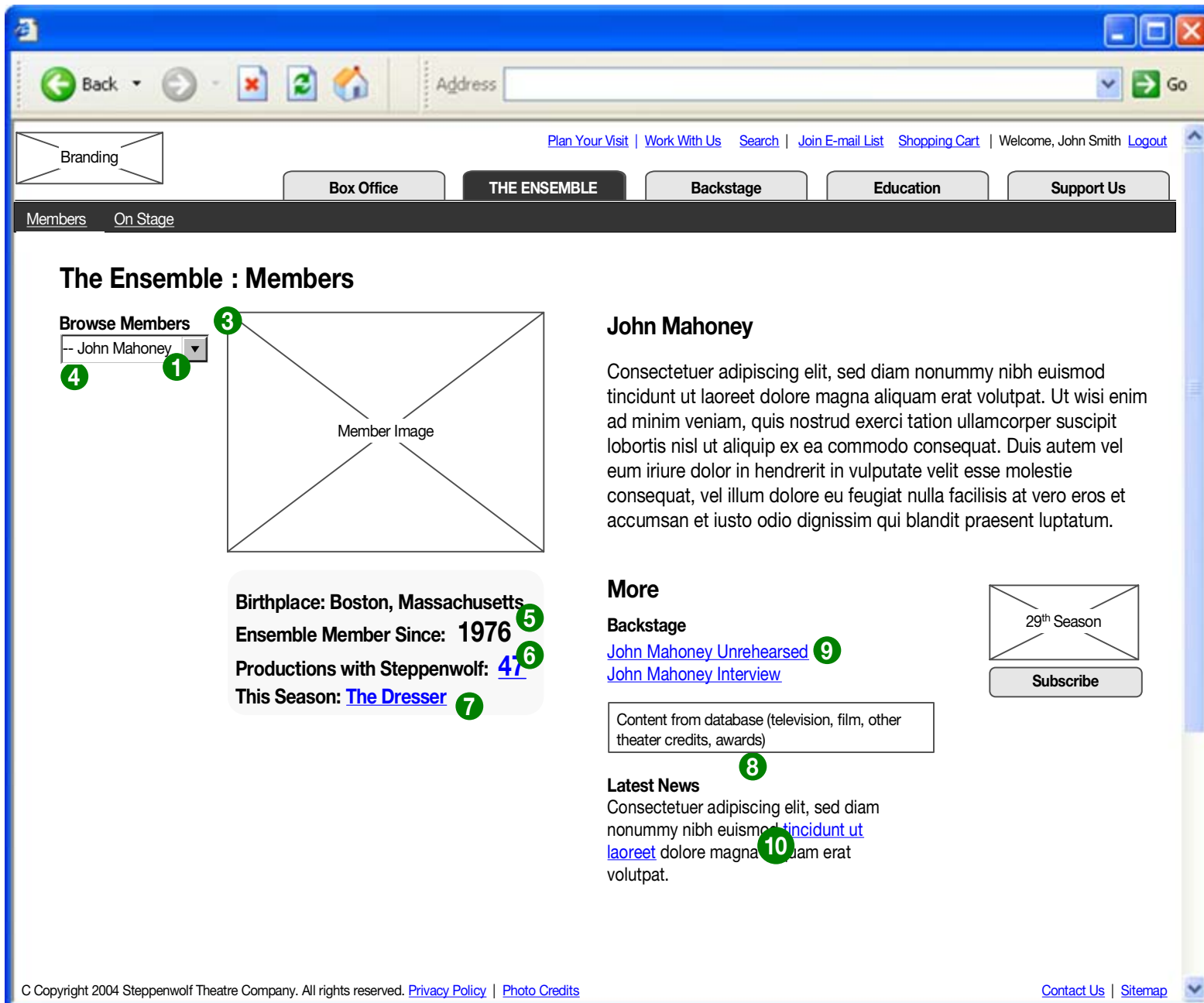
### COMMENTS

- 1 Include brief introduction to history and impact of Steppenwolf.  
  
This copy was pulled from 25<sup>th</sup> Anniversary book dust jacket. It is for placement and suggestion only.
- 2 Link to 4.8.0 History
- 3 Member browser. A method of moving through all 35 members.  
  
Thoughts on functionality:  
- this could be a flash piece that lands on a randomly selected ensemble member. Scrolling left or right bring more members into focus. Clicking on member takes user to member page. This device could also be used as navigation on member pages (rather than a list).  
  
Get final functionality from design comps.
- 4 Pull latest three news items.
- 5 Subscribe button must be removable across site (dynamically). Season graphic will need to be changed yearly.
- 6 Include "list all" as choice in list. Selection takes user to 3.1.0 Members



### COMMENTS

- 1 Intro copy should discuss what it means to be a member. Keep it to 1 paragraph
- 2 Grid of all members with headshots (or other image).
- 3 May have rollovers. Watch for bandwidth issues.



### COMMENTS

- 1 Functionality: drop down list contains all members. Design Considerations: also alternative navigation device. Includes List All as an option (goes to 3.1.0 Members)
- 3 Links to 3.3.0 On Stage
- 4 This navigation present for all member details pages
- 5 Quick fact area. Gives snapshot of member's history with STC.
- 6 Functionality: generate number based on database. Links to 3.1.x.x Prods at Steppenwolf
- 7 Lists all current productions. If no productions, this information should not display.
- 8 Areas only visible if recent news is entered
- 9 Links to supplementary information. Some articles may be in Backstage.
- 10 Link may be included manually in database.

# Steppenwolf Redesign Schematics (version 6)

3.1.x.x Prods at Steppenwolf



## COMMENTS

- 1 Current productions link to 2.3.x Explore Production
- 2 Past Productions link to 4.8.3.1.0 Past Production Detail

This document shows informational relationships only and does not represent final design or layout.

Prepared by POP  
Created/Revised: 11/10/2004

# Steppenwolf Redesign Schematics (version 6)

3.3.0 On Stage



Branding

Plan Your Visit | Work With Us | Search | Join E-mail List | Shopping Cart | Welcome, John Smith | Logout

Box Office | **THE ENSEMBLE** | Backstage | Education | Support Us

Members | On Stage

## The Ensemble : On Stage

**Browse Members**  
-- John Mahoney

[The Dresse](#)  
Ensemble members: [John Mahoney](#), [Tracy Letts](#), [Amy Morton](#)

[The Cherry Orchard](#)  
Ensemble members: [Ensemble Member](#)

Etc.

© Copyright 2004 Steppenwolf Theatre Company. All rights reserved. [Privacy Policy](#) | [Photo Credits](#) [Contact Us](#) | [Sitemap](#)

## COMMENTS

- 1 Page lists all events with ensemble members in them (including subscription series and other performance events).
- 2 Production name links to 2.3.x Explore Production
- 3 Member name links to 3.1.x Member Detail.

This document shows informational relationships only and does not represent final design or layout.

Prepared by POP  
Created/Revised: 11/10/2004

# Steppenwolf Redesign Schematics (version 6)

4.0 Backstage



Branding

Plan Your Visit | Work With Us | Search | Join E-mail List | Shopping Cart | Welcome, John Smith | Logout

Box Office | The Ensemble | **BACKSTAGE** | Education | Support Us

Archive | Latest News | History | People | New Plays Initiative | Steppenwolf Films

## Backstage

**Article Title**  
by [author] **3**  
Consectetuer adipiscing elit, sed diam nonummy nibh euismod tincidunt ut laoreet dolore magna aliquam erat volutpat. Ut wisi enim ad minim veniam, quis nostrud exerci tation ullamcorper suscipit lobortis nisl ut aliquip ex ea commodo consequat. **1**

**Article Title** **2**  
by [author]  
Ut wisi enim ad minim veniam, quis nostrud exerci tation ullamcorper suscipit lobortis nisl ut aliquip ex ea commodo consequat. Duis autem vel eum iriure dolor in hendrerit in vulputate velit esse molestie consequat, vel illum dolore eu feugiat nulla facilisis at vero eros et accumsan.

**Article Title**  
by [author]  
Ut wisi enim ad minim veniam, quis nostrud exerci tation ullamcorper suscipit lobortis nisl ut aliquip ex ea commodo consequat. Duis autem vel eum iriure dolor in hendrerit in vulputate velit esse molestie consequat, vel illum dolore eu feugiat nulla facilisis at vero eros et accumsan.

**Article Title**  
by [author]  
Ut wisi enim ad minim veniam, quis nostrud exerci tation ullamcorper suscipit lobortis nisl ut aliquip ex ea commodo consequat. Duis autem vel eum iriure dolor in hendrerit in vulputate velit esse molestie consequat, vel illum dolore eu feugiat nulla facilisis at vero eros et accumsan.

[More Articles in the Archive](#)

## Latest News

[Steppenwolf turns 30 next year.](#)

[Steppenwolf Theatre Company presents the Midwest premiere of \*Our Lady of 121st Street\*.](#) **4**

[Steppenwolf Theatre Company's Traffic series presents America's premiere political satirist Mort Sahl.](#)

[Steppenwolf Theatre is offering twenty \\$20 tickets for each performance of \*Our Lady of 121st Street\*.](#)

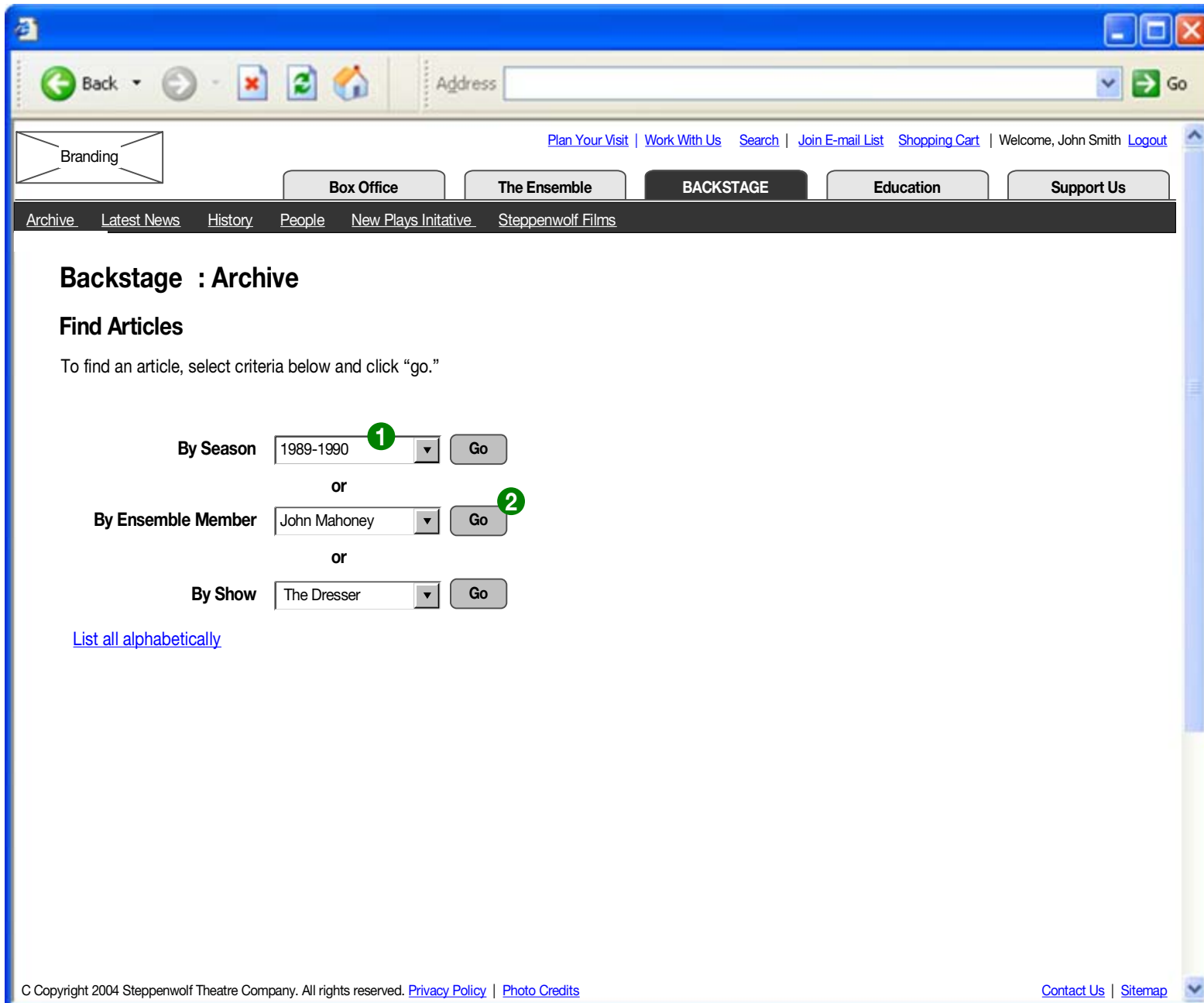
[Steppenwolf Theatre Company announces four of the five plays for the 2004-2005 subscription series.](#)

[More News](#)

© Copyright 2004 Steppenwolf Theatre Company. All rights reserved. [Privacy Policy](#) | [Photo Credits](#) [Contact Us](#) | [Sitemap](#)

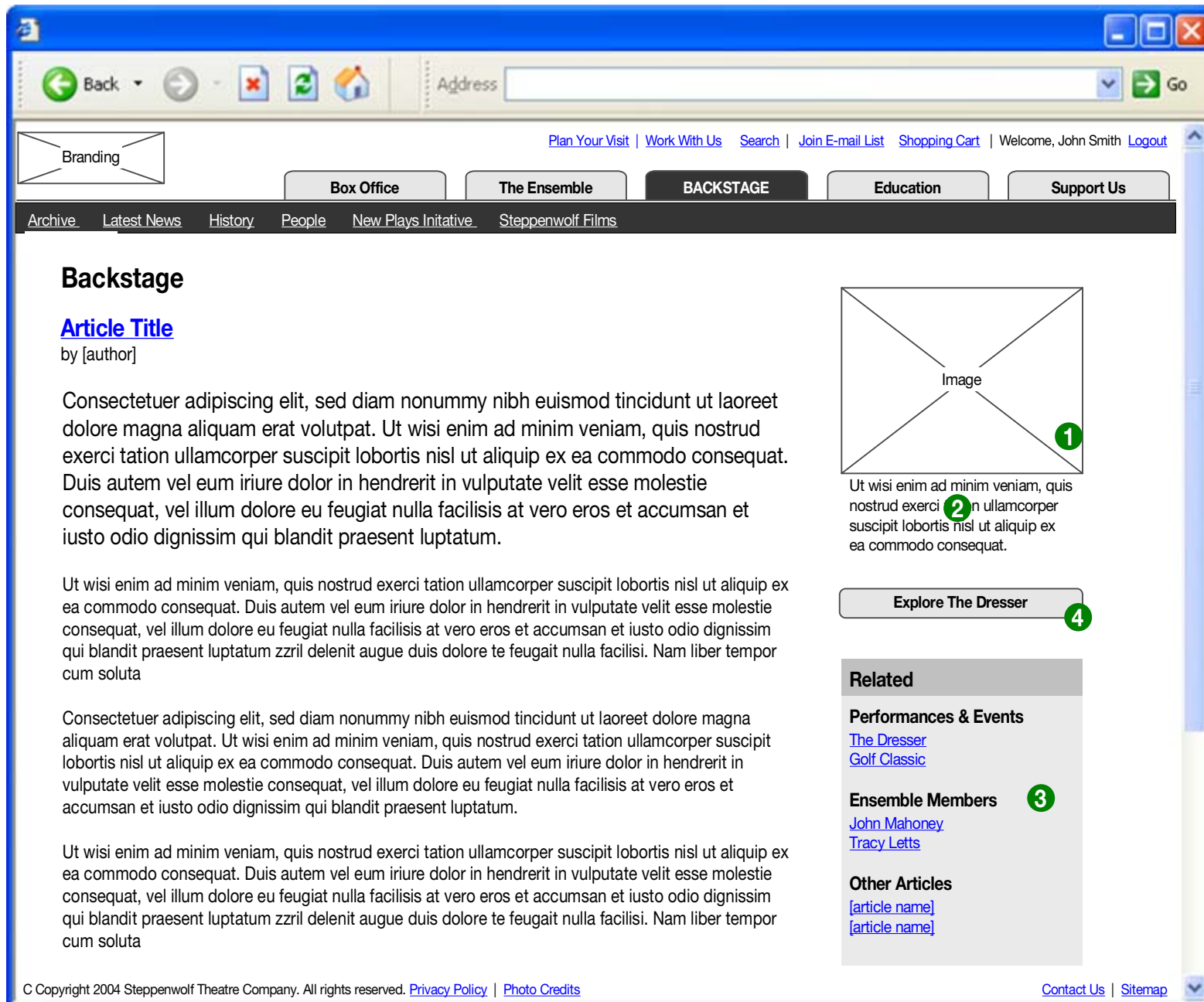
## COMMENTS

- 1** Change: Backstage home page will feature between 6-7 articles monthly.
- 2** Article teaser consists of :  
Article Title  
Author  
Short Description
- 3** Each article will be tagged with:  
Date  
Ensemble Member  
Production
- 4** Pulls latest Steppenwolf news.



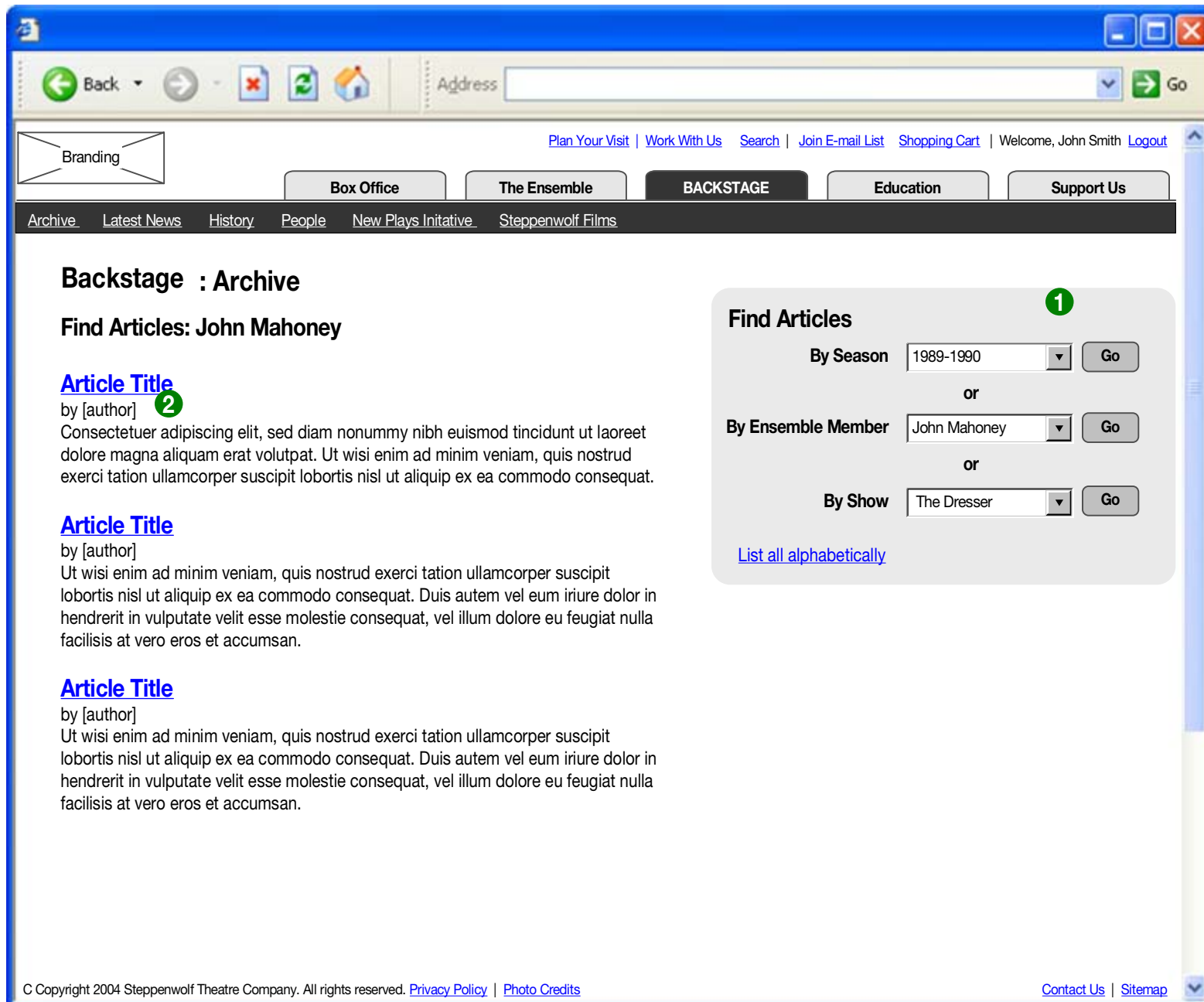
## COMMENTS

- 1 Find articles feature allows user to browse article archive by: Season (same as Past Productions) Ensemble Member (same list as Ensemble) Show (all productions of show with same name - use year to distinguish). All alphabetically
- 2 Operations are boolean (only one set of criteria can be selected at once).



### COMMENTS

- 1 A single image can be used to illustrate the article
- 2 Image can have a single caption.
- 3 Related information is generated using the management tool. Functionality TBD.
- 4 Links to explore page of associated production. Design consideration: will need to be HTML text because this will be dynamic.

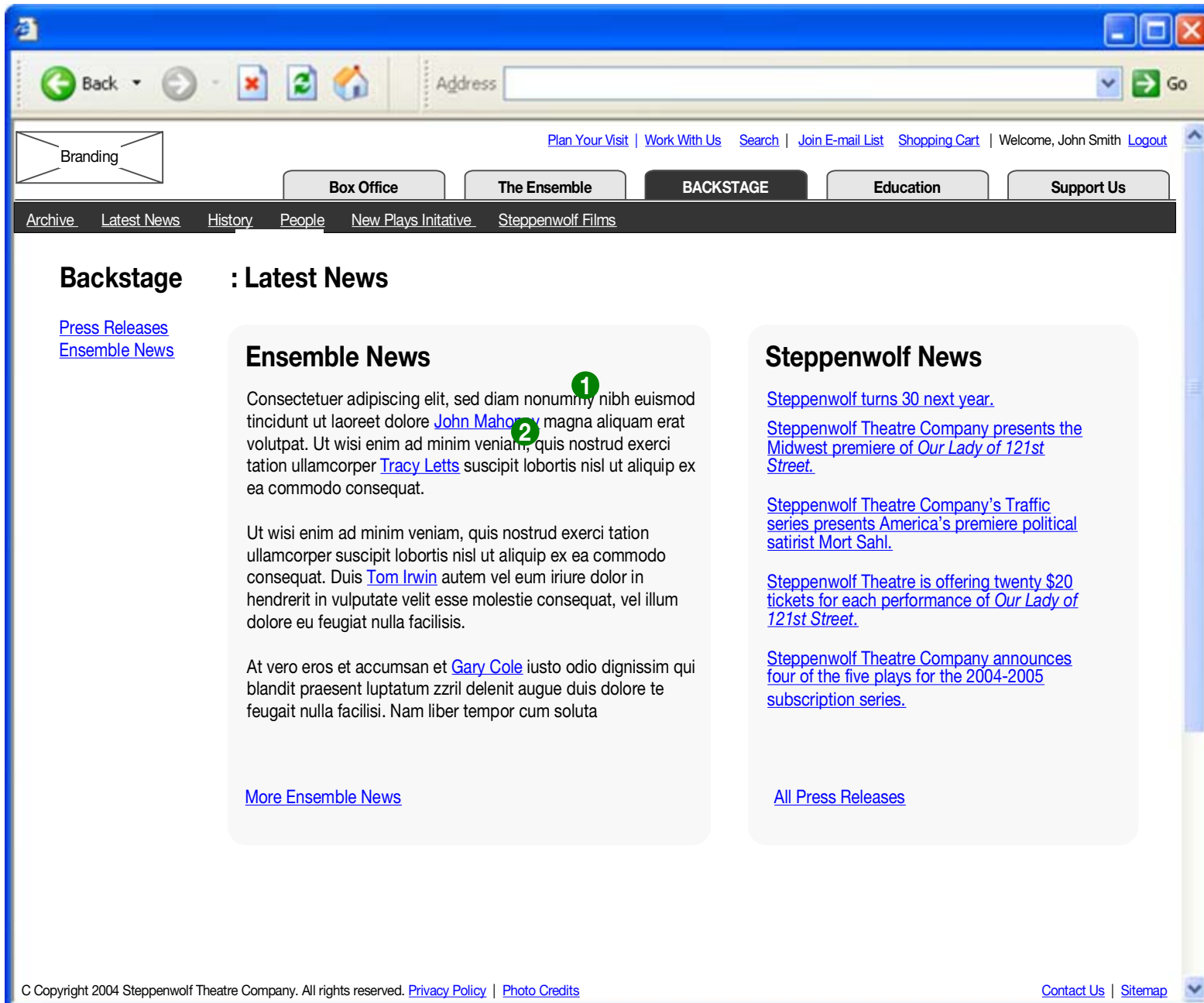


### COMMENTS

- 1 Same functionality as 4.1.0 Archive.
- 2 Same information structure as 4.0 Backstage

# Steppenwolf Redesign Schematics (version 6)

4.4.0 Latest News

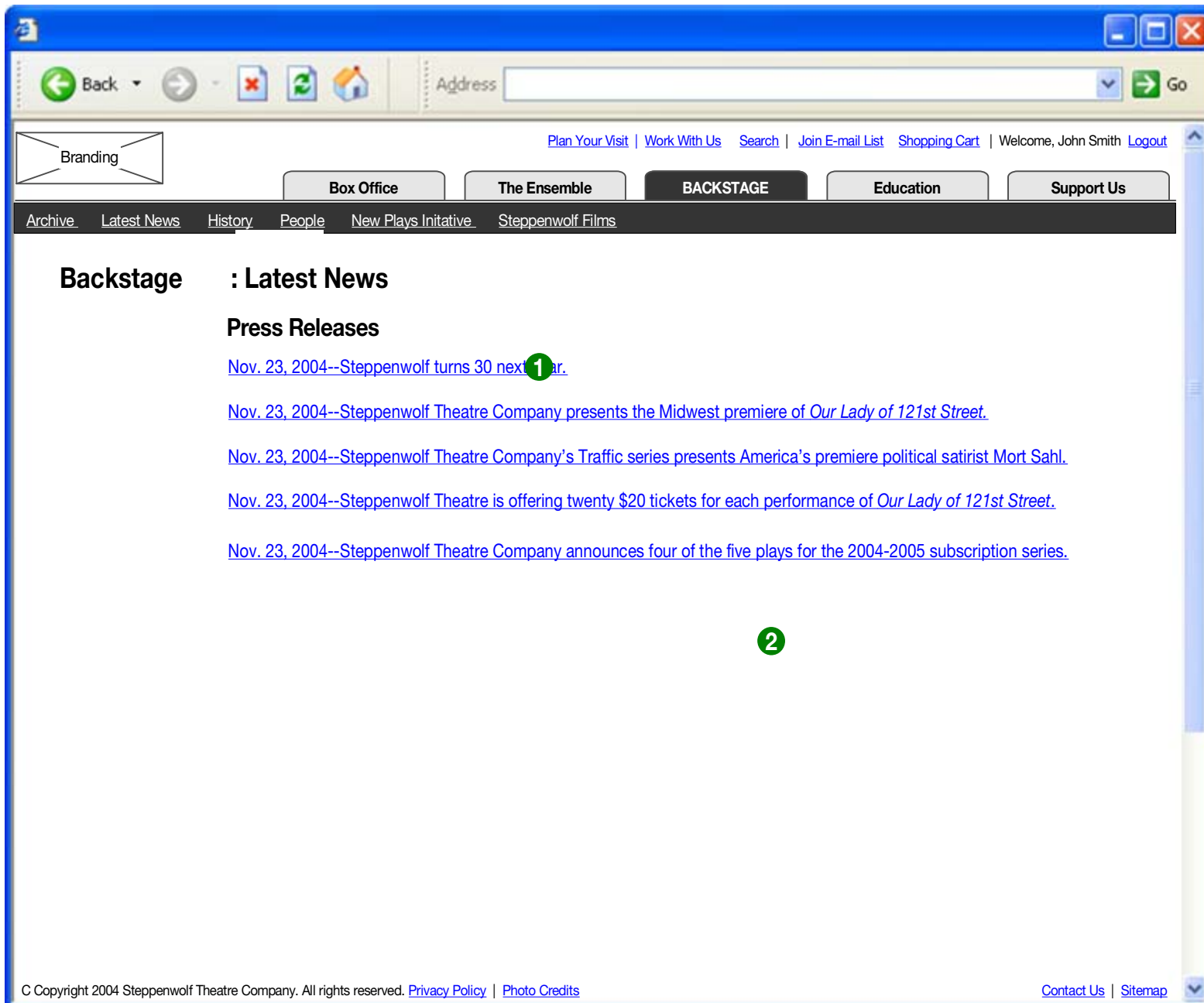


## COMMENTS

- 1 Includes latest 3-5 ensemble news stories.
- 2 Ensemble names link to 3.1.x Ensemble Detail.

# Steppenwolf Redesign Schematics (version 6)

4.4.1.0 Press Releases

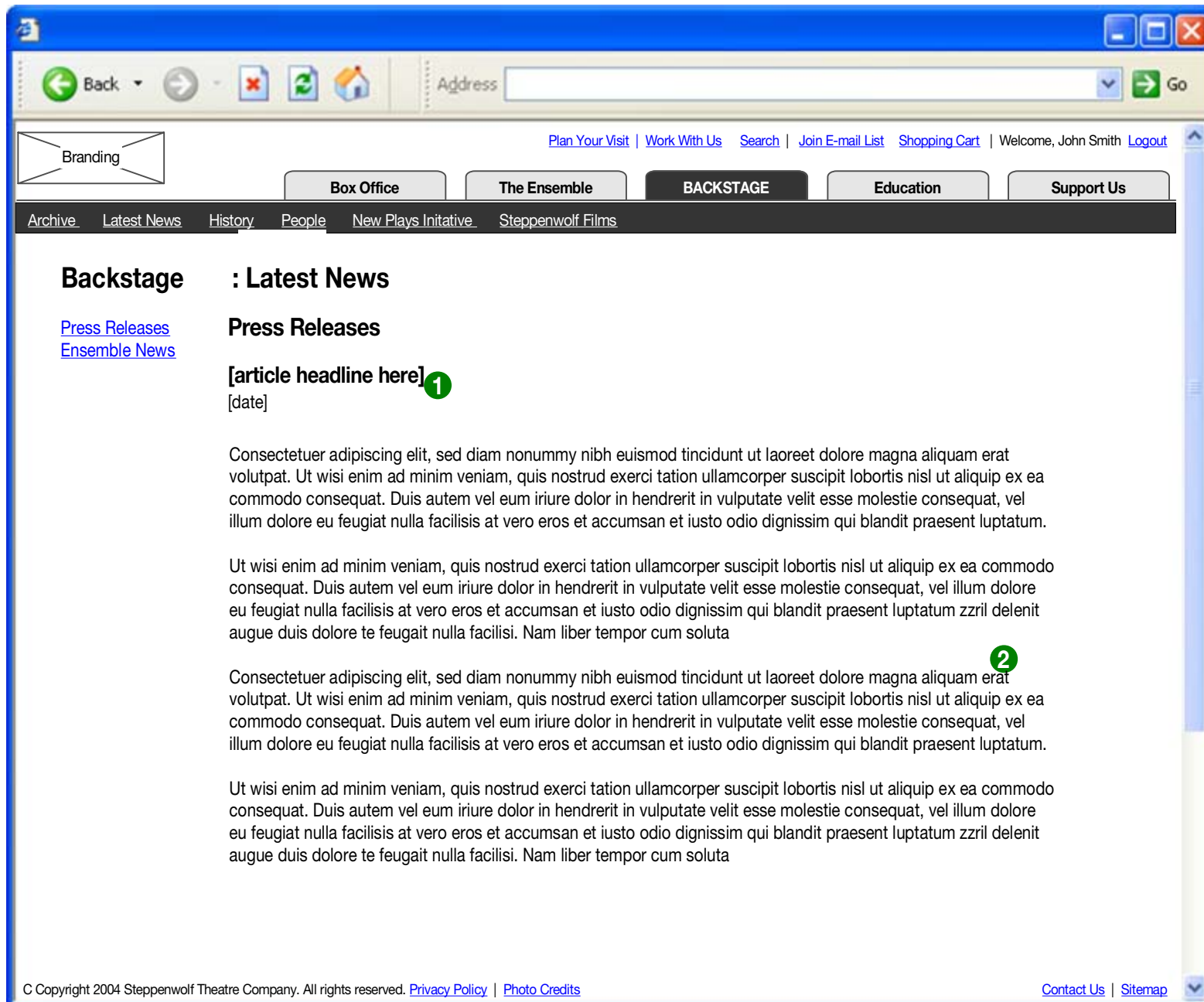


## COMMENTS

- 1 List all press releases, including date
- 2 Archiving rules need to be determined. Is there a set length for display or do we store all forever? Alternatively, the tool can allow press releases to also be manually activated. TBD

This document shows informational relationships only and does not represent final design or layout.

Prepared by POP  
Created/Revised: 11/10/2004



### COMMENTS

- 1 Info added in content tool.
- 2 Body can contain any format. Subheaders will need to be added with HTML.

# Steppenwolf Redesign Schematics (version 6)



## 4.4.2 Ensemble News

Backstage : Latest News

[Press Releases](#)  
[Ensemble News](#)

**Ensemble News**

Consectetuer adipiscing elit, sed diam nonummy nibh euismod tincidunt ut laoreet dolore [John Mahoney](#) magna aliquam erat volutpat. Ut wisi enim ad minim veniam, quis nostrud exerci tation ullamcorper [Tracy Letts](#) suscipit lobortis nisl ut aliquip ex ea commodo consequat.

Ut wisi enim ad minim veniam, quis nostrud exerci tation ullamcorper suscipit lobortis nisl ut aliquip ex ea commodo consequat. Duis [Tom Irwin](#) autem vel eum iriure dolor in hendrerit in vulputate velit esse molestie consequat, vel illum dolore eu feugiat nulla facilisis.

At vero eros et accumsan et [Gary Cole](#) iusto odio dignissim qui blandit praesent luptatum zzril delenit augue duis dolore te feugait nulla facilisi. Nam liber tempor cum soluta

Consectetuer adipiscing elit, sed diam nonummy nibh euismod tincidunt ut laoreet dolore [John Mahoney](#) magna aliquam erat volutpat. Ut wisi enim ad minim veniam, quis nostrud exerci tation ullamcorper [Tracy Letts](#) suscipit lobortis nisl ut aliquip ex ea commodo consequat.

Ut wisi enim ad minim veniam, quis nostrud exerci tation ullamcorper suscipit lobortis nisl ut aliquip ex ea commodo consequat. Duis [Tom Irwin](#) autem vel eum iriure dolor in hendrerit in vulputate velit esse molestie consequat, vel illum dolore eu feugiat nulla facilisis.

At vero eros et accumsan et [Gary Cole](#) iusto odio dignissim qui blandit praesent luptatum zzril delenit augue duis dolore te feugait nulla facilisi. Nam liber tempor cum soluta

© Copyright 2004 Steppenwolf Theatre Company. All rights reserved. [Privacy Policy](#) | [Photo Credits](#) [Contact Us](#) | [Sitemap](#)

### COMMENTS

- 1 Lists all active ensemble news stories

# Steppenwolf Redesign Schematics (version 6)

4.8.0 History



Backstage : History

[More History](#)

**Browse Seasons**  
-- 1979-1980

[List All Productions](#)

Consectetuer adipiscing elit, sed diam nonummy nibh euismod tincidunt ut laoreet dolore magna aliquam erat volutpat. Ut wisi enim ad minim veniam, quis nostrud exerci tation ullamcorper suscipit lobortis nisl ut aliquip ex ea commodo consequat. Duis autem vel eum iriure dolor in hendrerit in vulputate velit esse molestie consequat, vel illum dolore 2 eugiat nulla facilisis at vero eros et accumsan et iusto odio dignissim qui blandit praesent luptatum. [More >](#)

**2000's 1**  
[2004-2005](#) | [2003-2004](#) | [2002-2003](#) | [2001-2002](#) | [2000-2001](#)

**1990's**  
[1999-2000](#) | [1998-1999](#) | [1997-1998](#) | [1996-1997](#) | [1995-1996](#) | [1994-1995](#) | [1993-1994](#) | [1992-1993](#) | [1991-1992](#) | [1990-1991](#)

**1980's**  
[1989-1990](#) | [1988-1989](#) | [1987-1988](#) | [1986-1987](#) | [1985-1986](#) | [1984-1985](#) | [1983-1984](#) | [1982-1983](#) | [1981-1982](#) | [1980-1981](#)

**1970's**  
[1979-1980](#) | [1978-1979](#) | [1977-1978](#) | [1976-1977](#) | [1975-1976](#) | [1974-1975](#) | [1973-1974](#) | [1972-1973](#) | [1971-1972](#) | [1970-1971](#)

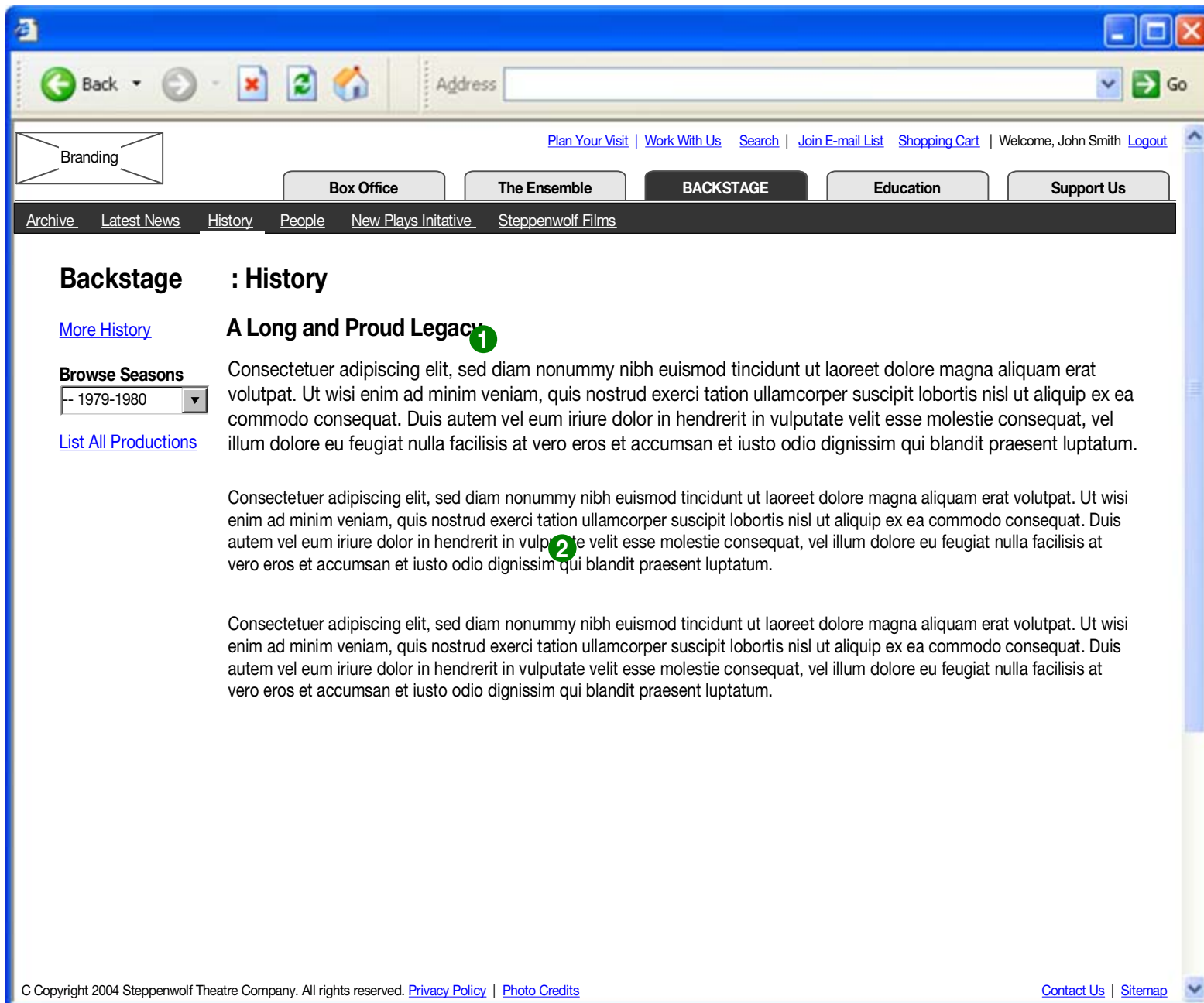
© Copyright 2004 Steppenwolf Theatre Company. All rights reserved. [Privacy Policy](#) | [Photo Credits](#) [Contact Us](#) | [Sitemap](#)

## COMMENTS

- 1 Lists all past season in reverse chronological order.
- 2 Intro paragraph hints at the long history of Steppenwolf
- 3 Links to 3.2.1 More History

# Steppenwolf Redesign Schematics (version 6)

## 4.8.1 More History



### COMMENTS

- 1 **1** Headline for placement
- 2 **2** More comprehensive history

# Steppenwolf Redesign Schematics (version 6)

## 4.8.2 List All Productions



Backstage : History

[More History](#)

**Browse Seasons**

-- 1979-1980

[List All Productions](#)

**A**

[\[Production Name\], \[season\]](#)

[\[Production Name\], \[season\]](#)

[\[Production Name\], \[season\]](#)

[\[Production Name\], \[season\]](#)

[\[Production Name\], \[season\]](#)

[\[Production Name\], \[season\]](#)

[\[Production Name\], \[season\]](#)

[\[Production Name\], \[season\]](#)

[\[Production Name\], \[season\]](#)

[\[Production Name\], \[season\]](#)

[top](#)

**B**

[Balm in Gilead, 1980-1981](#)

[\[Production Name\], \[season\]](#)

[\[Production Name\], \[season\]](#)

[\[Production Name\], \[season\]](#)

[\[Production Name\], \[season\]](#)

[\[Production Name\], \[season\]](#)

[\[Production Name\], \[season\]](#)

[\[Production Name\], \[season\]](#)

[\[Production Name\], \[season\]](#)

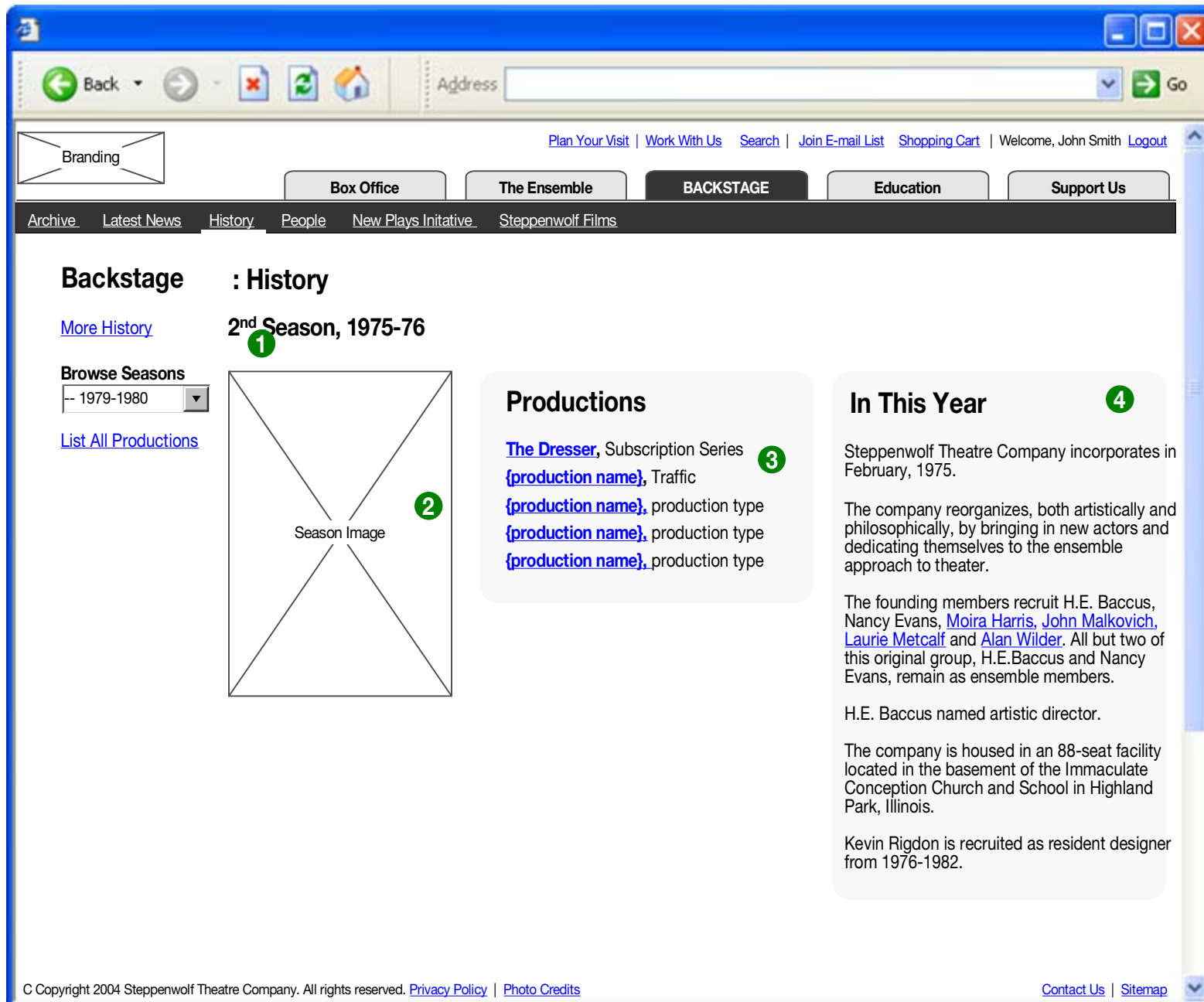
[top](#)

etc

© Copyright 2004 Steppenwolf Theatre Company. All rights reserved. [Privacy Policy](#) | [Photo Credits](#) [Contact Us](#) | [Sitemap](#)

### COMMENTS

- 1 Functionality: productions listed alphabetically
- 2 Clicking on letter jumps to corresponding anchor.
- 3 Production names link to production detail page.



### COMMENTS

- 1 Page title includes both season years and season number.
  - 2 Select an image that best represents feeling or work of selected season
  - 3 Lists all productions from season, with type, if appropriate.
- Note: types change over the years, so past production type fields will need some flexibility.
- 4 Pull information from the existing timeline here.

# Steppenwolf Redesign Schematics (version 6)

## 4.8.3.1.0 PastProduction Detail

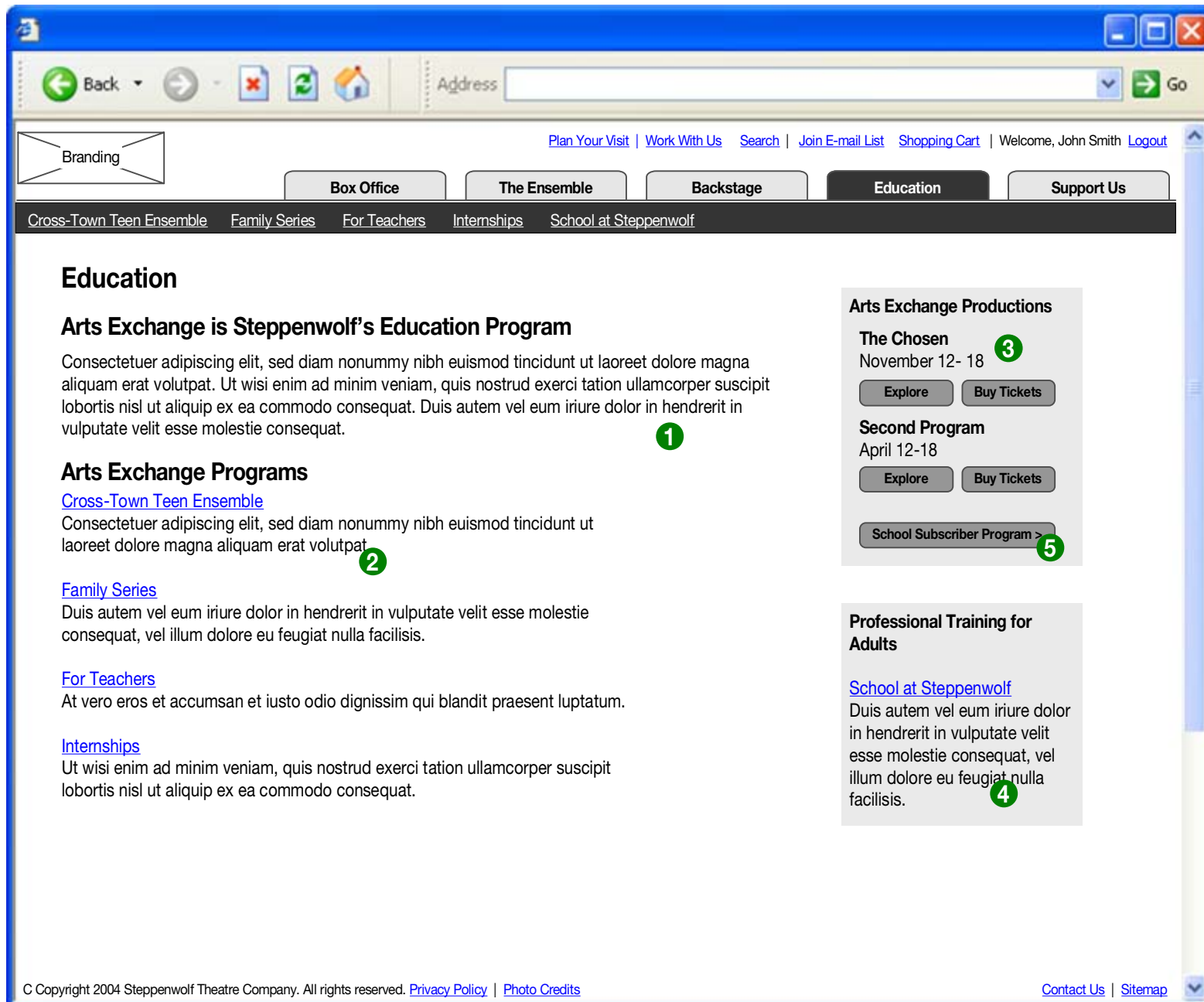


### COMMENTS

- 1 Short description
- 2 Links to related backstage articles, if available.
- 3 Behind the Scenes piece. TBD. If this does not exist, then just a static image.
- 4 This page is essentially the same as 2.3.0 Explore Production.

# Steppenwolf Redesign Schematics (version 6)

5.0 Education

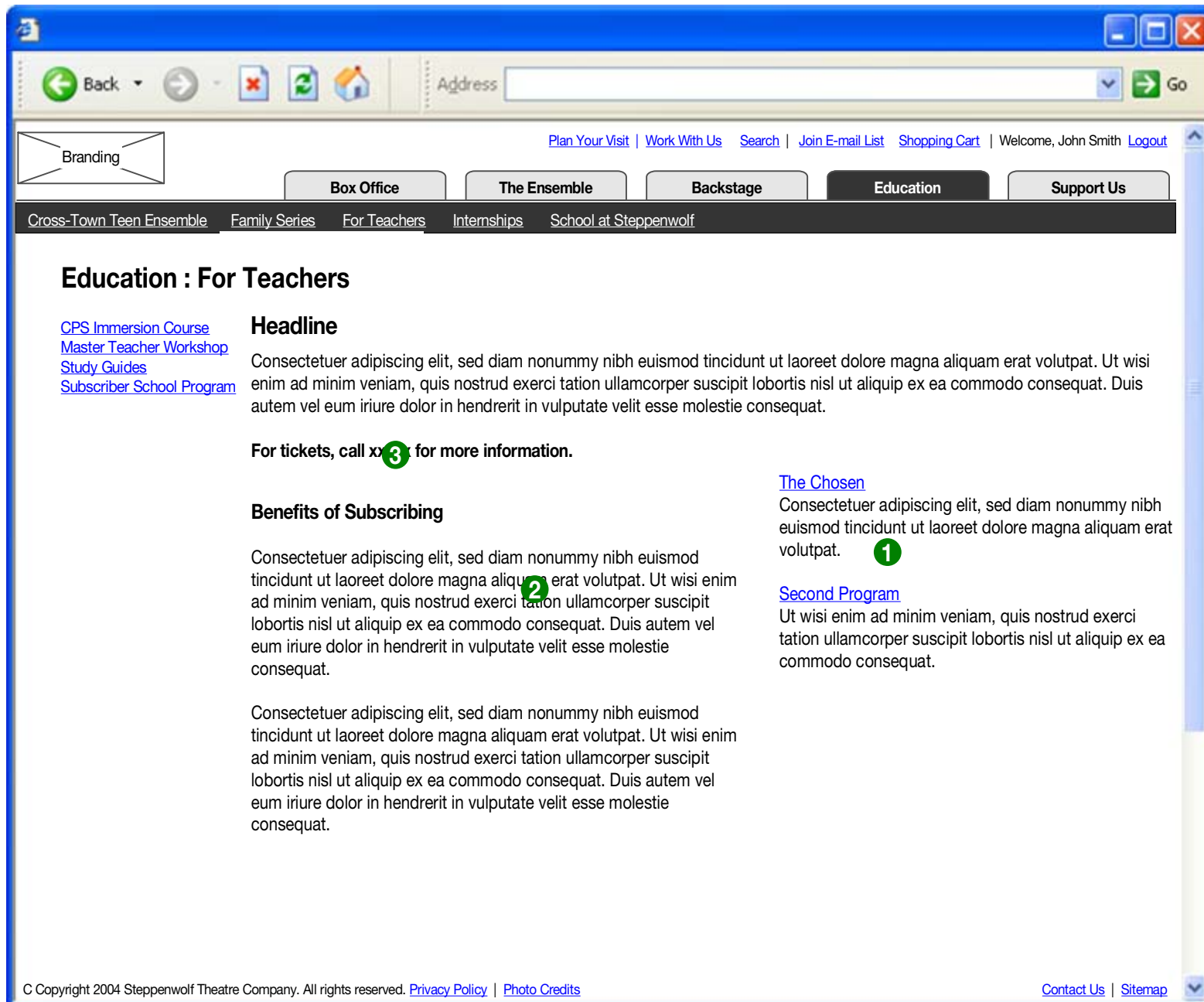


## COMMENTS

- 1 Give intro to program
- 2 Give summary of each program in 1-2 sentences. Link to program page.
- 3 This year's subscriber school programs are displayed here, with links to the explore production page.
- 4 School at Steppenwolf is not an Arts Exchange program and should be visually distinguished as a professional training program for adults
- 5 Links to 5.4.4 School Subscriber Program

# Steppenwolf Redesign Schematics (version 6)

## 5.4.4 Subscriber School Program

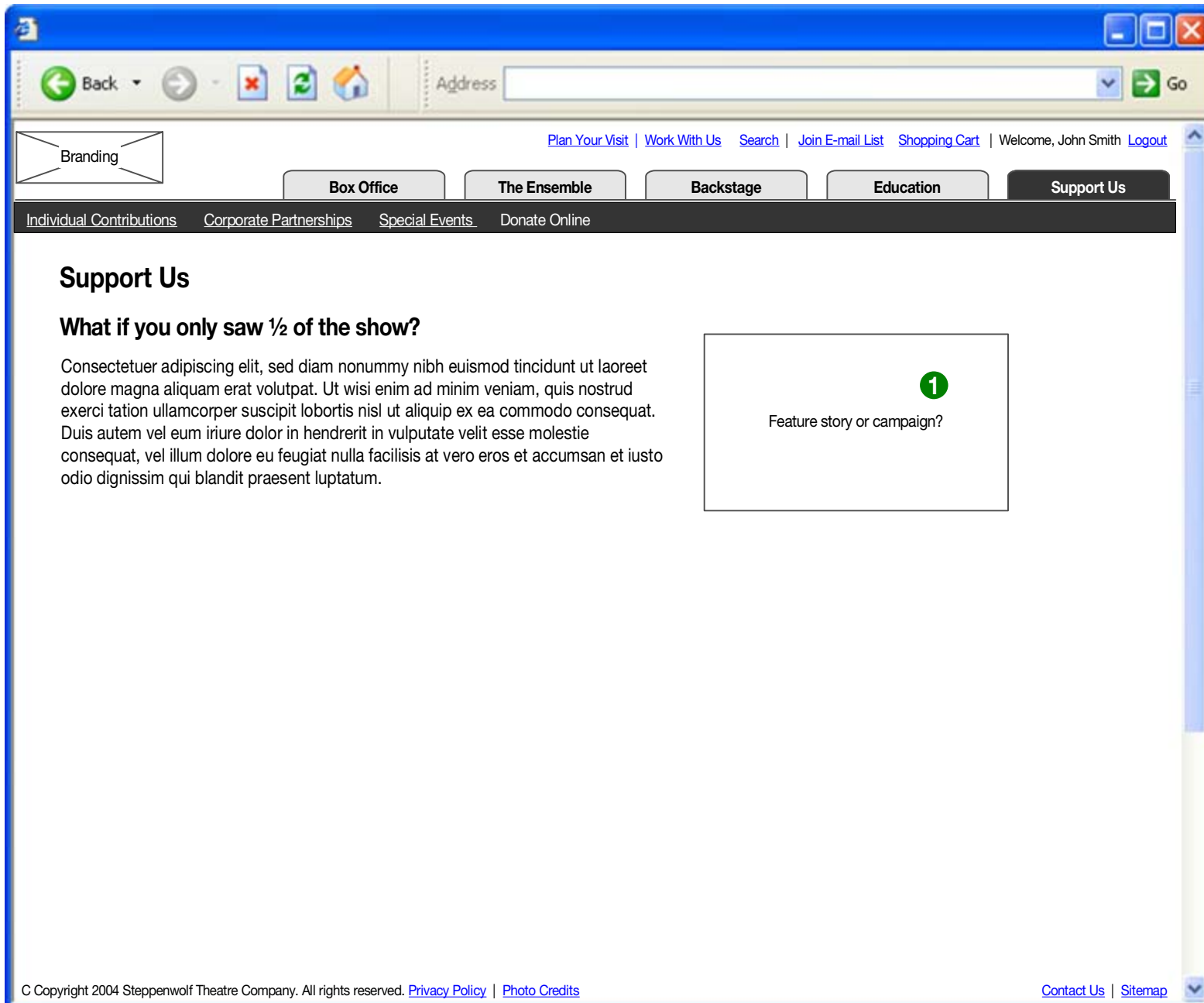


### COMMENTS

- 1 This year's subscriber school programs are displayed here, with links to the explore production page.
- 2 Benefits section
- 3 Prominent call to action

# Steppenwolf Redesign Schematics (version 6)

6.0 Support Us

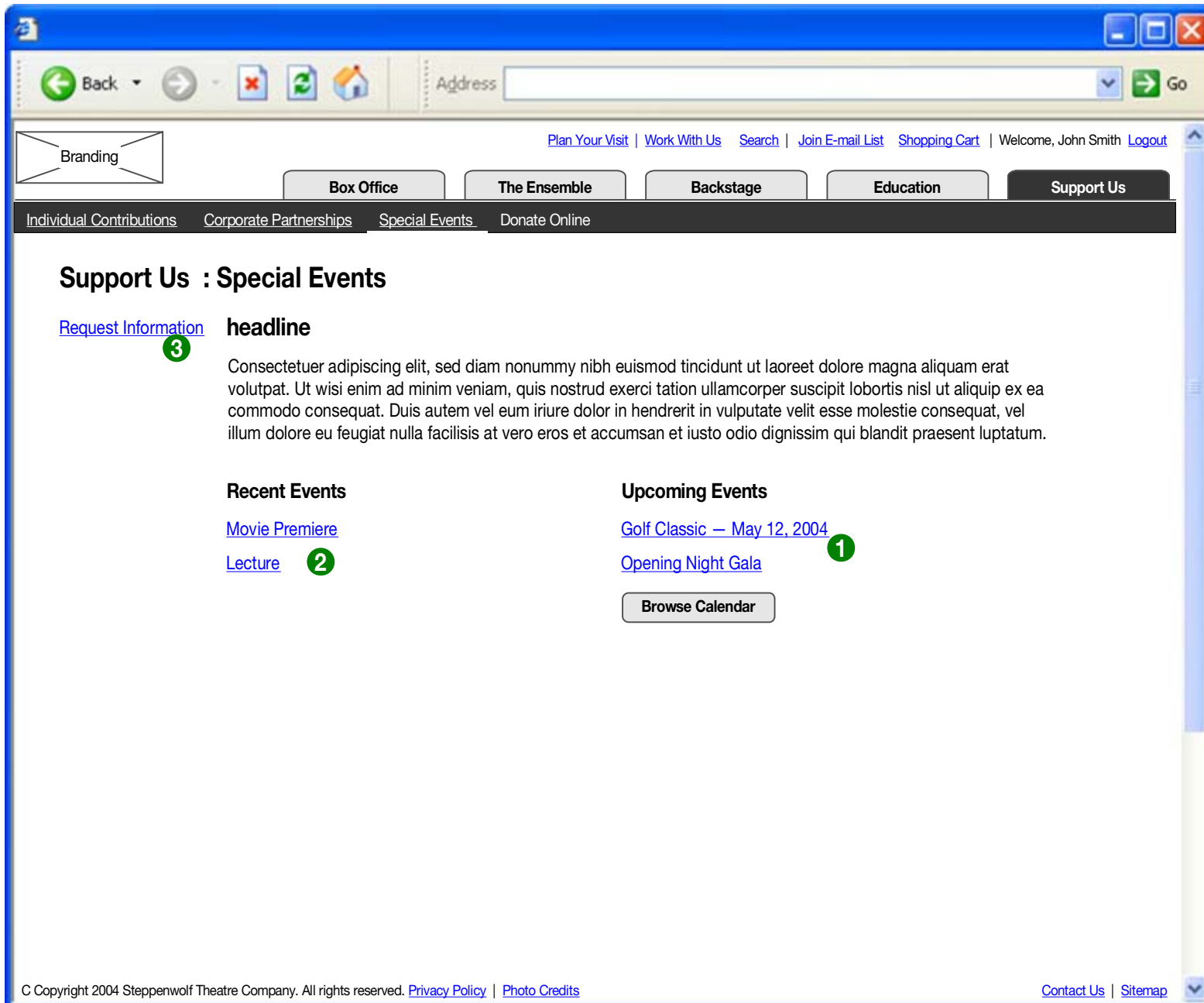


## COMMENTS

- 1 Area can be used to feature upcoming events, patrons, etc. Not managed with content tool.

# Steppenwolf Redesign Schematics (version 6)

## 6.3.0 Special Events



### COMMENTS

- 1 Lists all upcoming events added in database.
- 2 Previous events are listed with links to event detail (for photos).
- 3 Does there need to be a specific Special Events information request form, or would it make sense to have one for the entire section and allow the user to specify their interest?