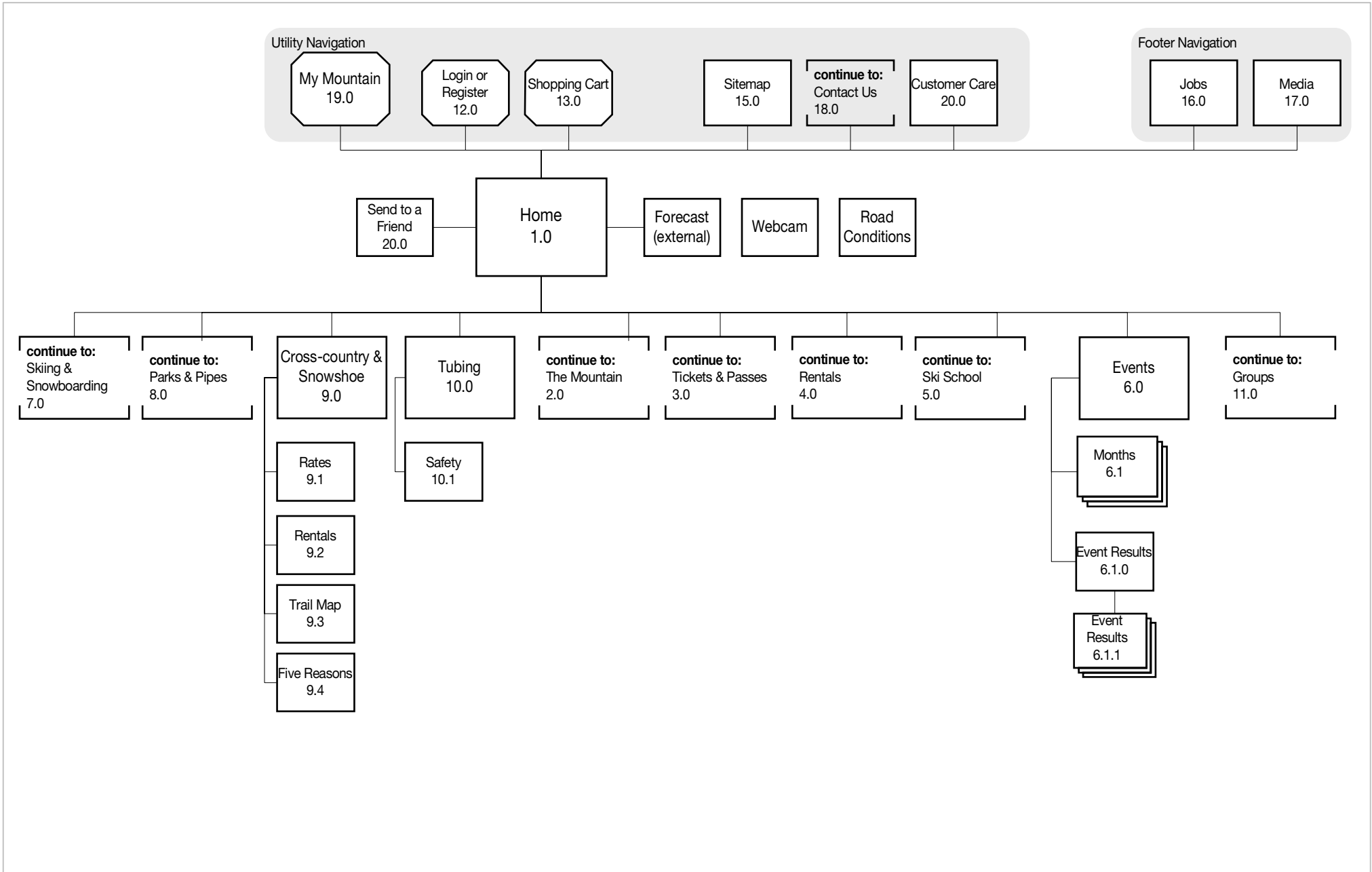


Stevens Pass Redesign Architecture (version 2)

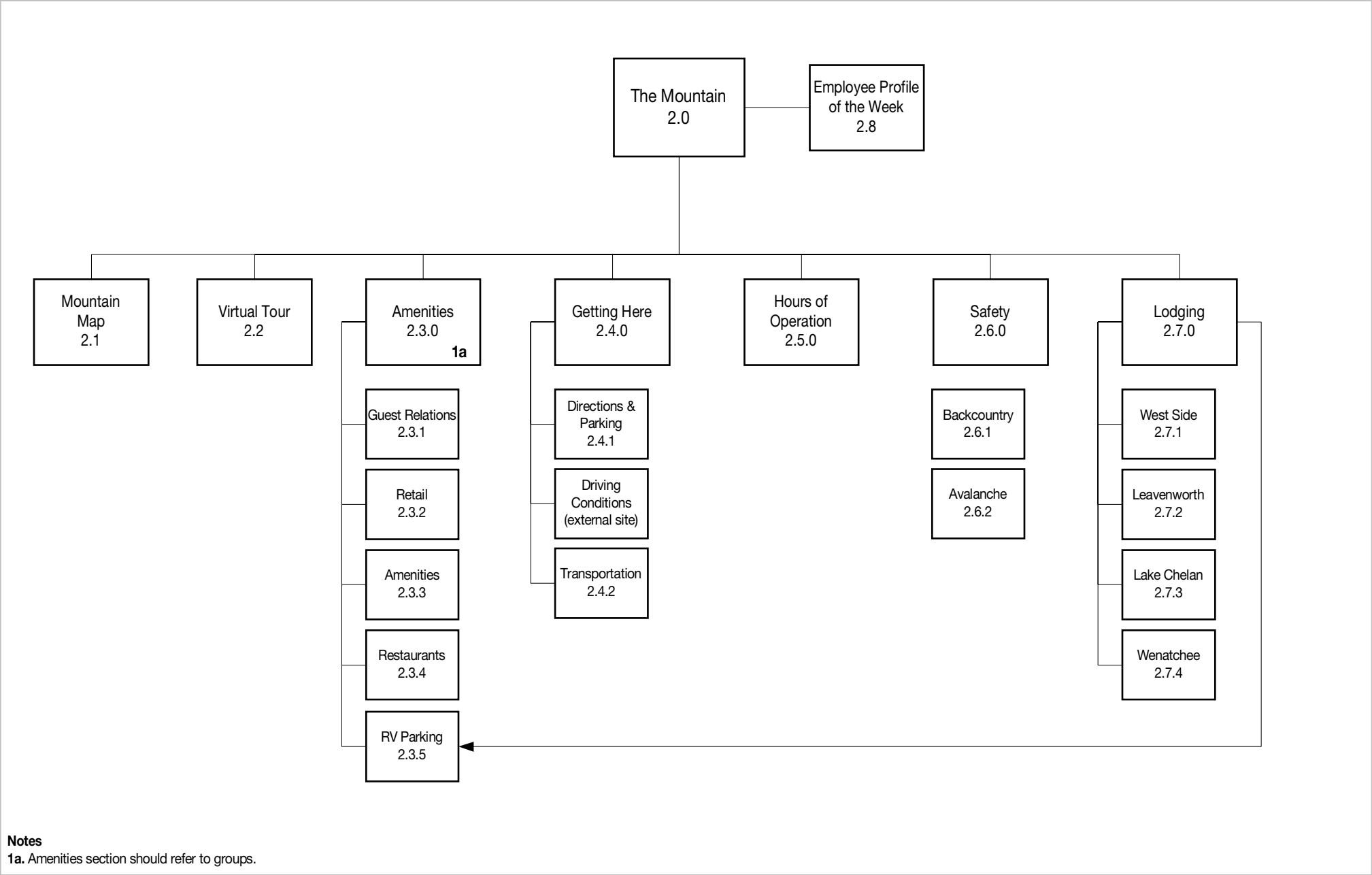


Overview



Stevens Pass Redesign Architecture (version 2)

2.0 The Mountain

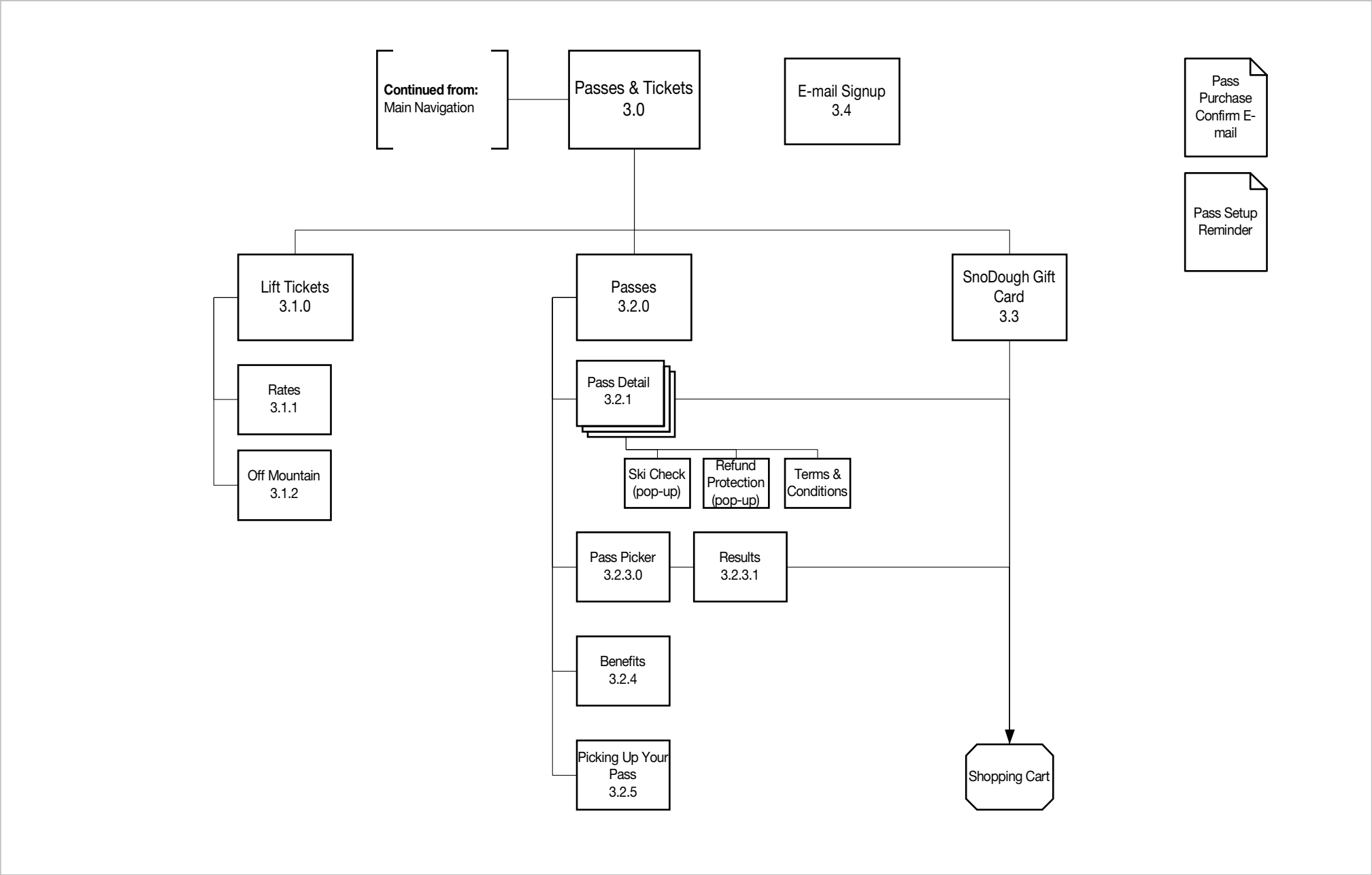


Notes
1a. Amenities section should refer to groups.

Stevens Pass Redesign Architecture (version 2)



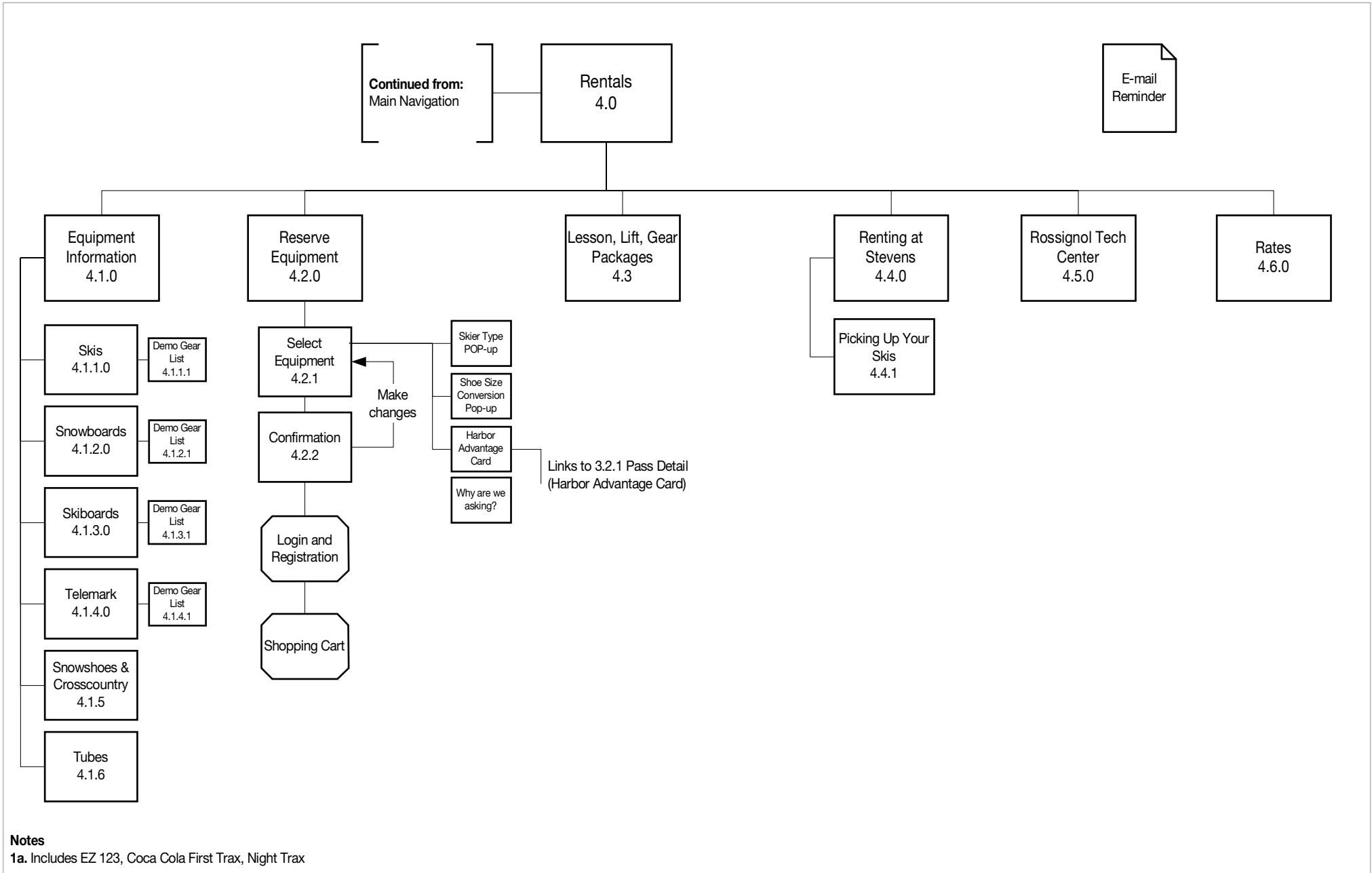
3.0 Passes & Tickets



Stevens Pass Redesign Architecture (version 2)



4.0 Rentals



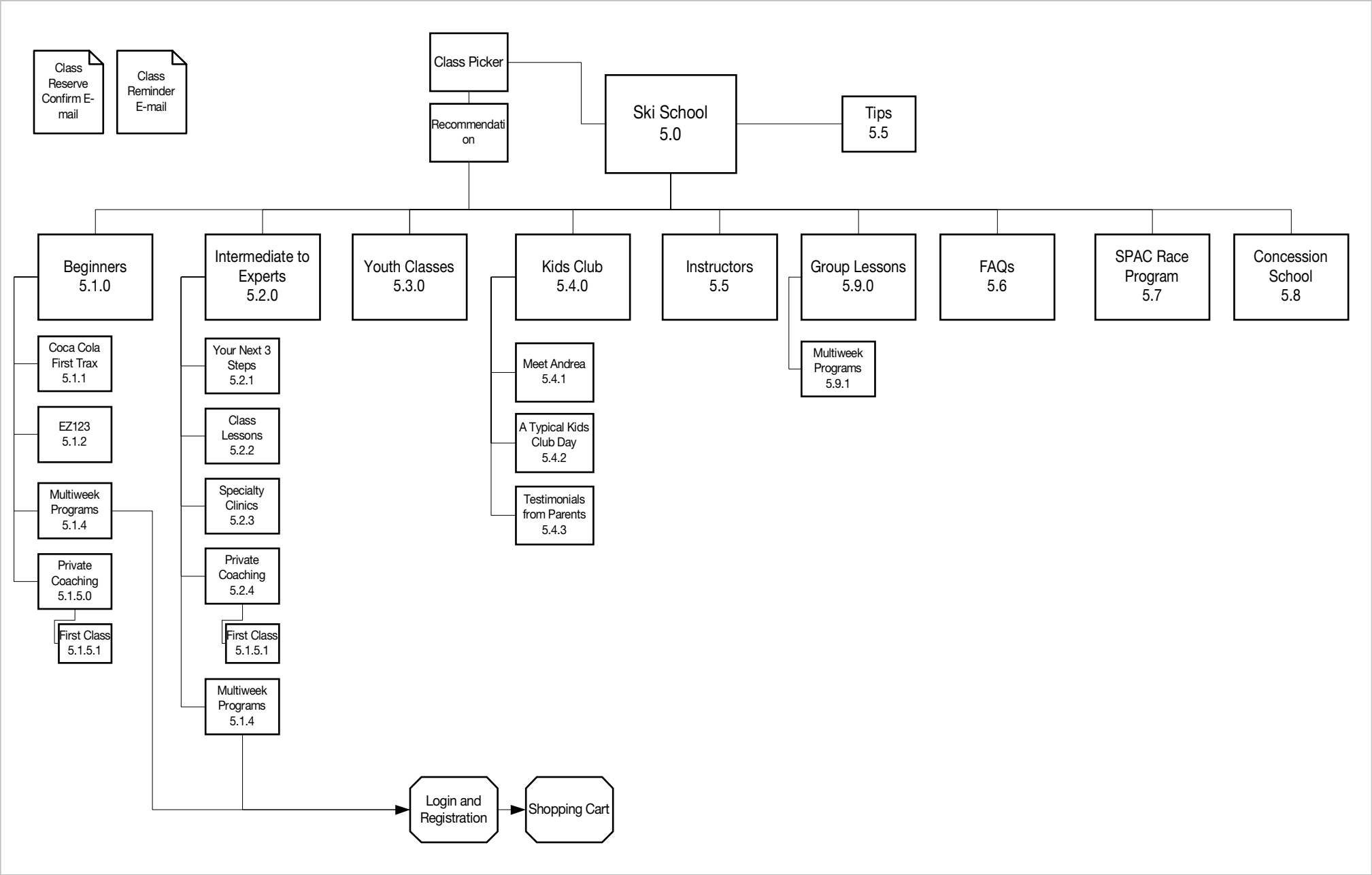
Notes

1a. Includes EZ 123, Coca Cola First Trax, Night Trax

Stevens Pass Redesign Architecture (version 2)

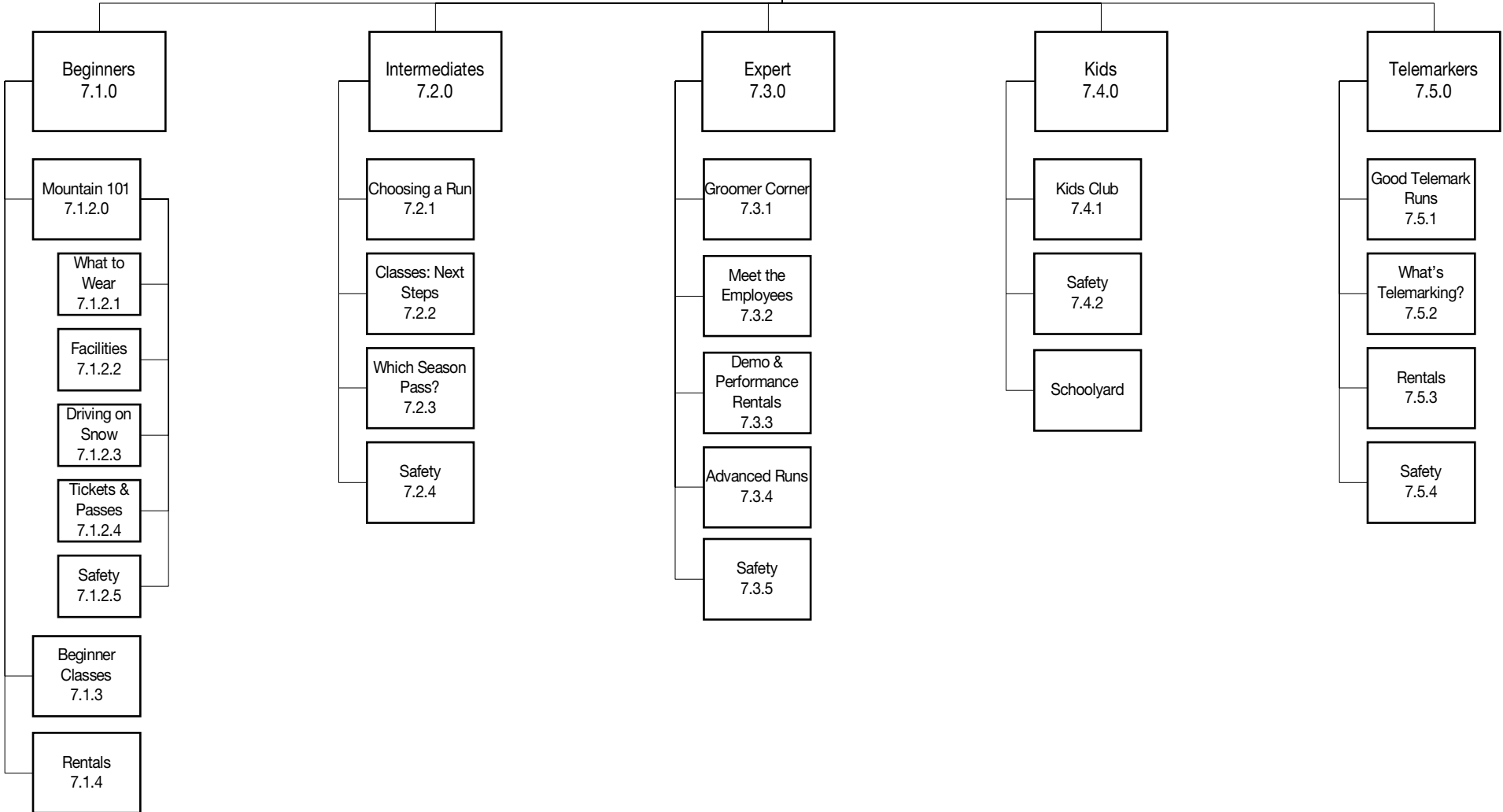


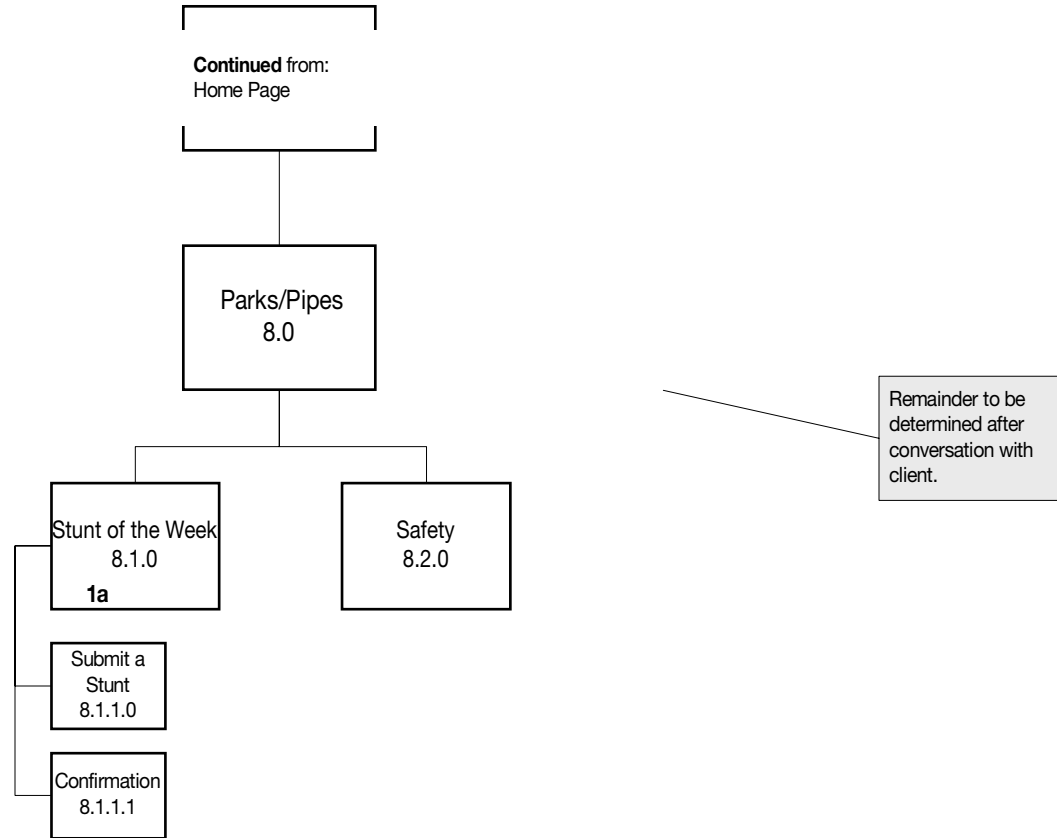
5.0 Ski School



Continued from:
Home page

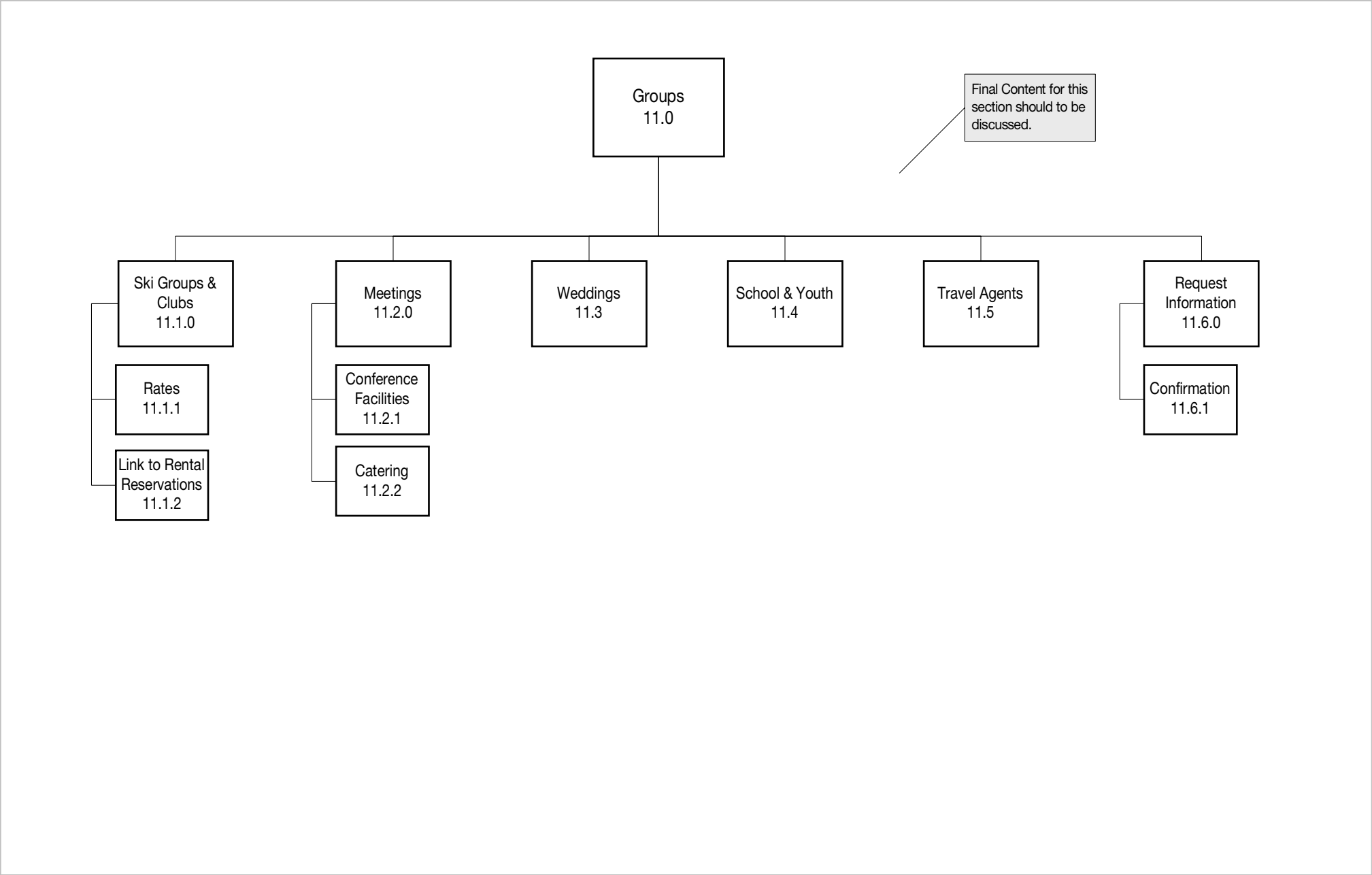
Skiing & Snowboarding 7.0

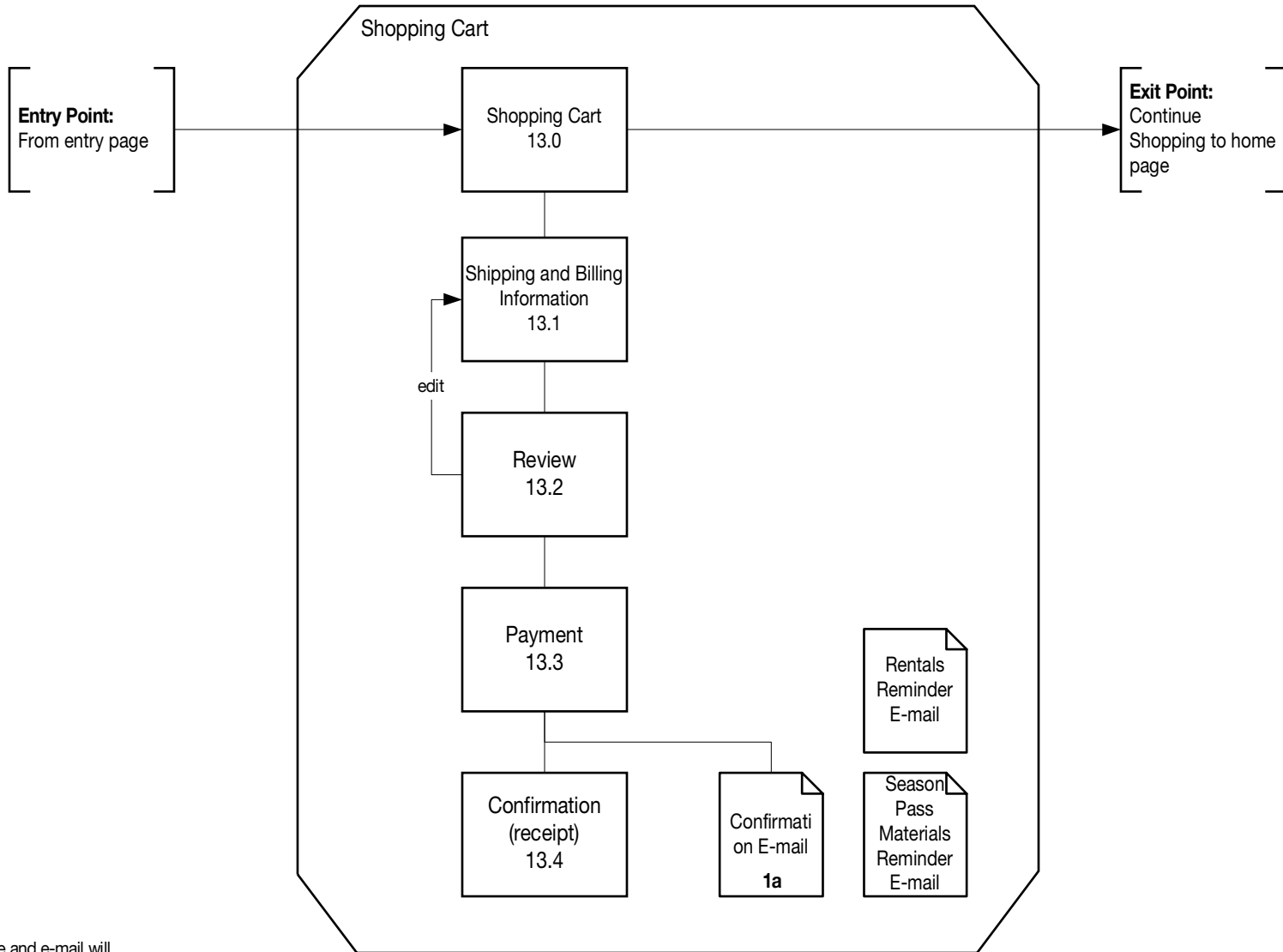




Notes

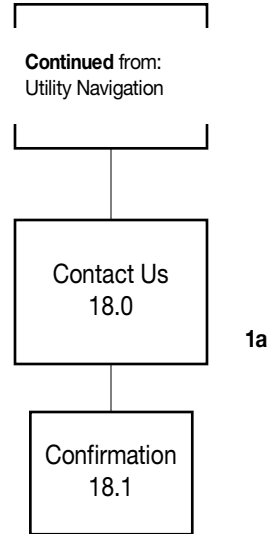
1a. Includes "Stunt of the Week" photo and brief comment. All photos and comments are submitted to site and approved by Harbor Properties.





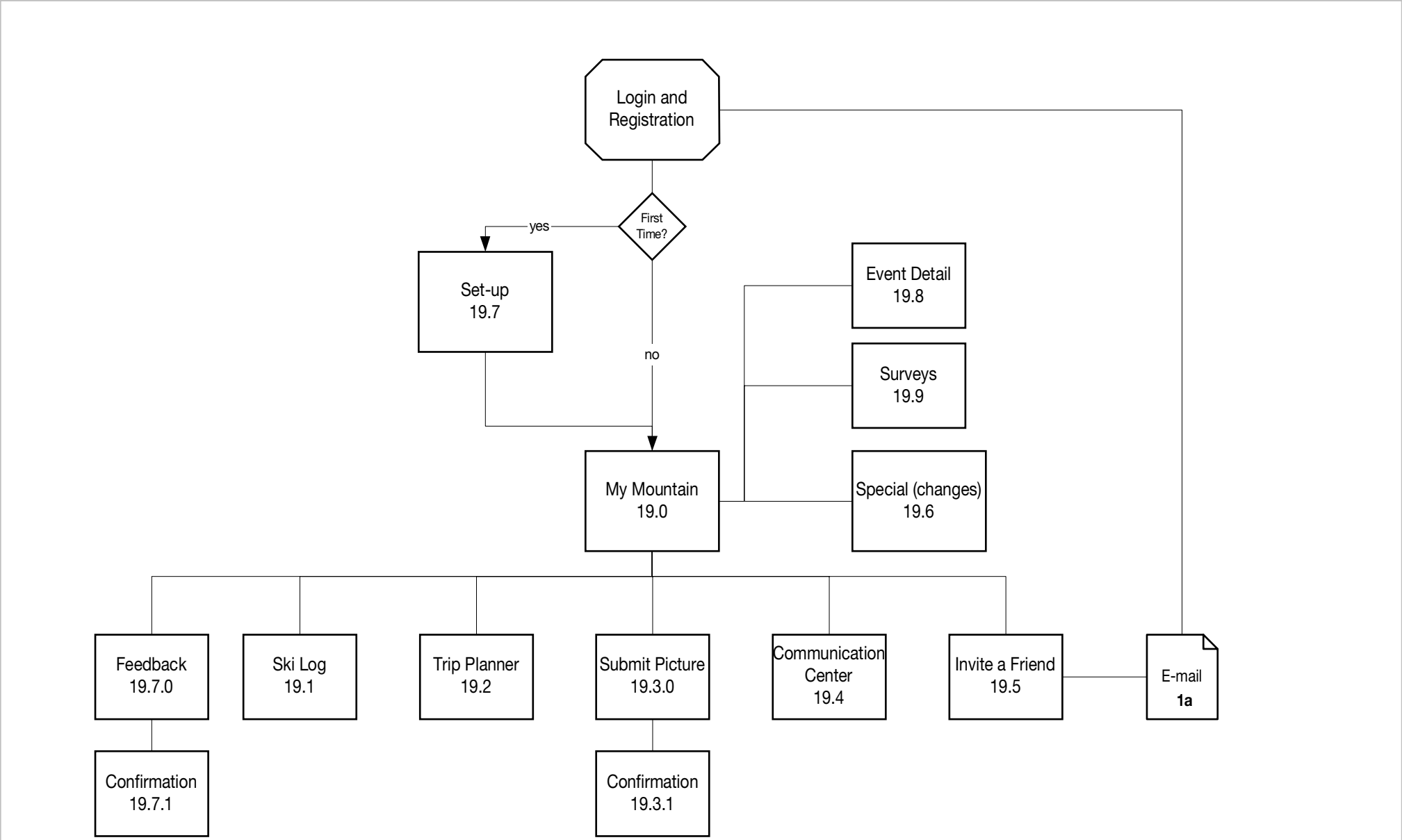
Notes

1a. Contents of both confirmation page and e-mail will depend upon content of cart. For Season Passes, confirmation will also contain a checklist of materials needed to complete Season Pass and information for obtaining pass.



Notes

1a. Page includes feedback form.



Notes
 1a. E-mail tells recipient about trip and invites him/her to join My Mountain.